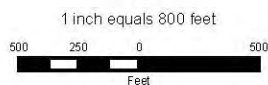


October 2006

LEGEND

- Well
- Town
- Stock Pond
- Basin Boundary
- Sub-Area Boundary
- Section Boundary



Zuni River Basin
Hydrographic Survey

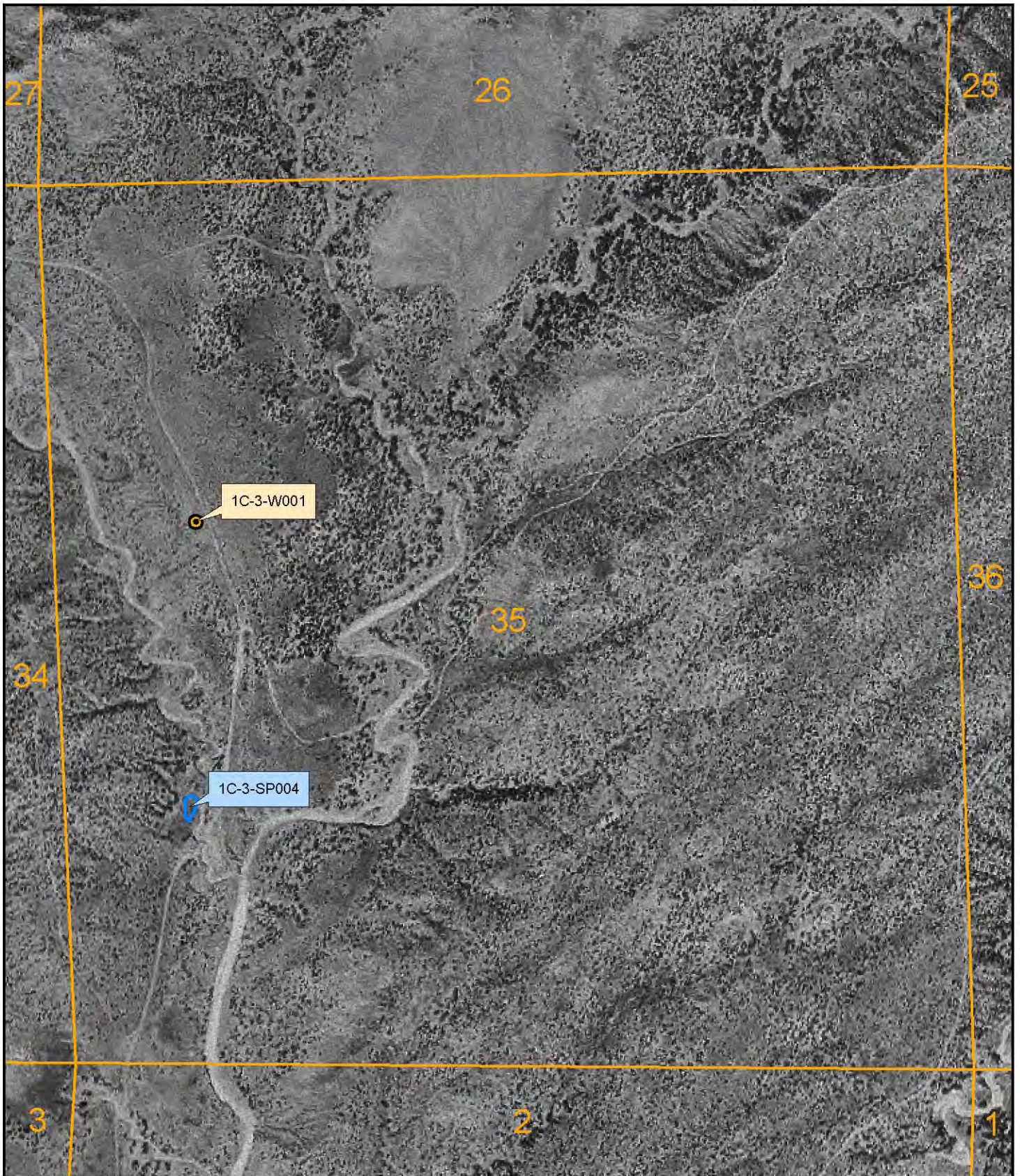
Subfile Number: ZRB-1-0075 Consolidated
PLSS: S27, T11N, R19W
Sheet 13 of 88



Natural Resources Consulting Engineers, Inc.

Fort Collins, CO Oakland, CA Asmara, ERITREA

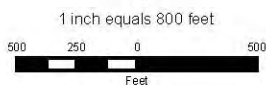
Project Manager: L. Niel Allen, P.E., Ph.D.



October 2006

LEGEND

-  Well
-  Town
-  Stock Pond
-  Basin Boundary
-  Sub-Area Boundary
-  Section Boundary



Zuni River Basin
Hydrographic Survey

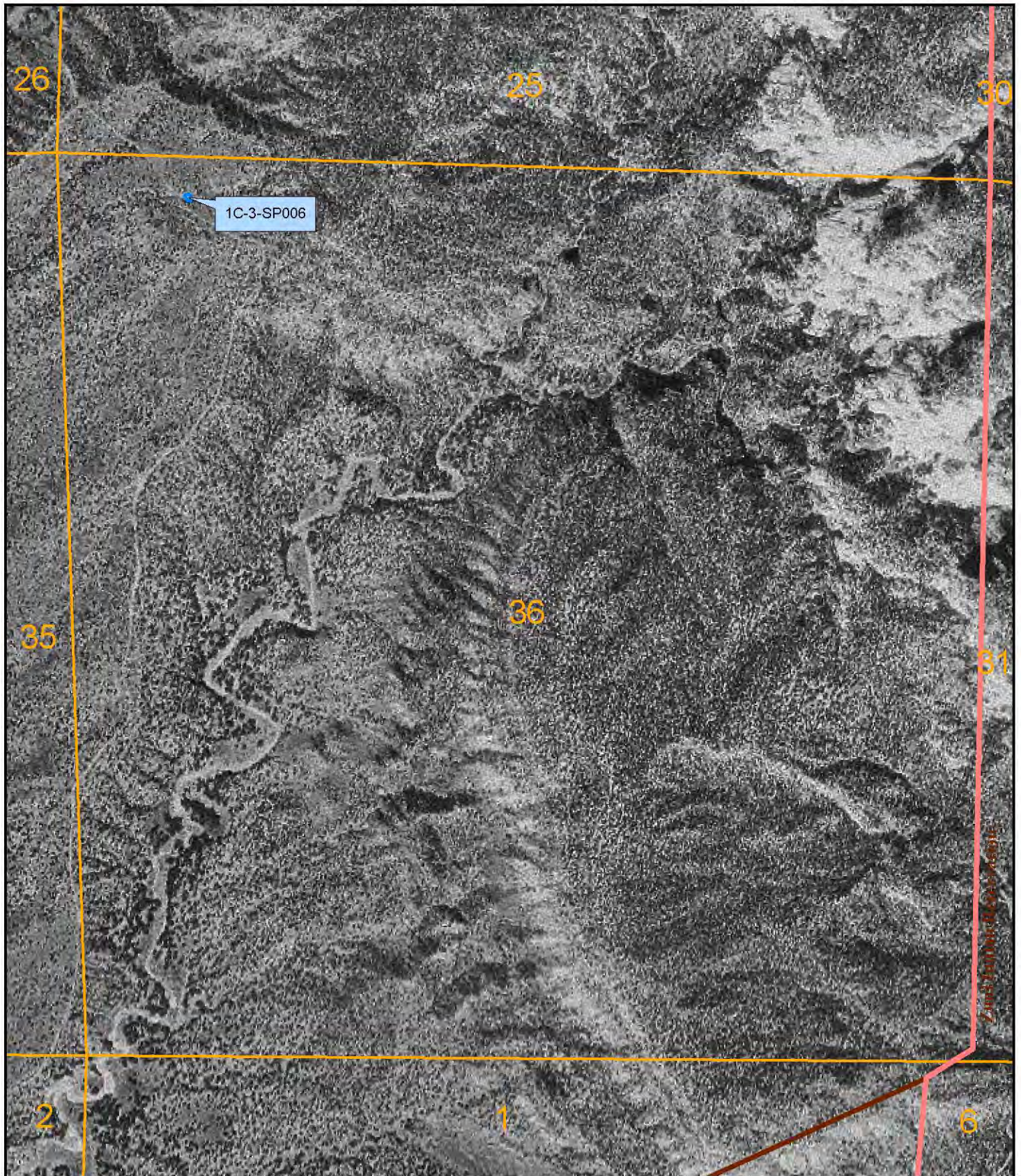
Subfile Number: ZRB-1-0075 Consolidated
PLSS: S35, T11N, R19W
Sheet 14 of 88



Natural Resources Consulting Engineers, Inc.

Fort Collins, CO Oakland, CA Asmara, ERITREA

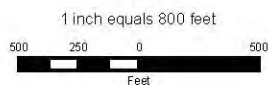
Project Manager: L. Niel Allen, P.E., Ph.D.



October 2006

LEGEND

-  Well
-  Town
-  Stock Pond
-  Basin Boundary
-  Sub-Area Boundary
-  Section Boundary



Zuni River Basin
Hydrographic Survey

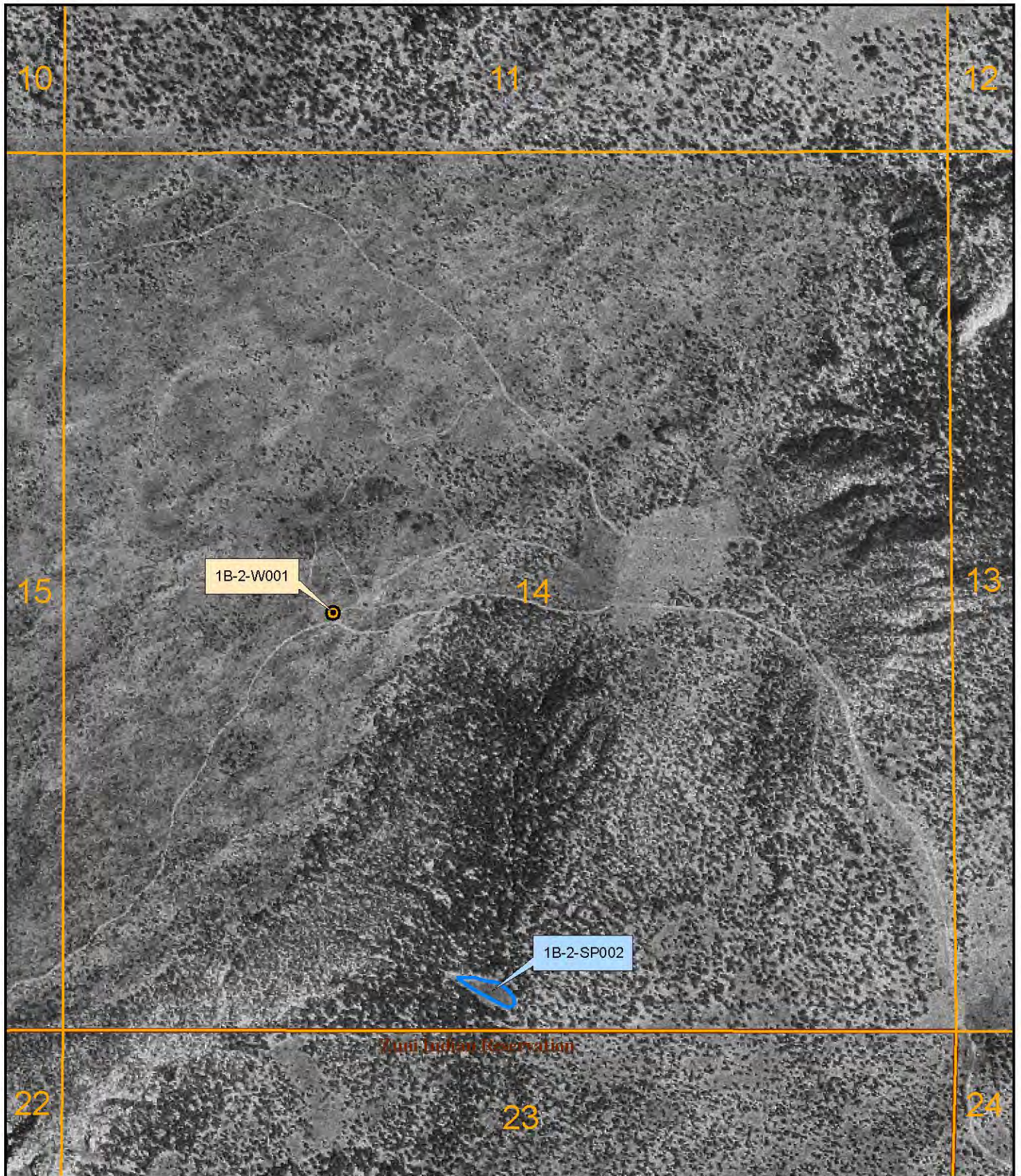
Subfile Number: ZRB-1-0075 Consolidated
PLSS: S36, T11N, R19W
Sheet 15 of 88



Natural Resources Consulting Engineers, Inc.

Fort Collins, CO Oakland, CA Asmara, ERITREA

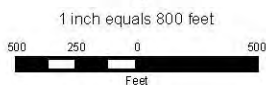
Project Manager: L. Niel Allen, P.E., Ph.D.



October 2006

LEGEND

-  Well
-  Town
-  Stock Pond
-  Basin Boundary
-  Sub-Area Boundary
-  Section Boundary



Zuni River Basin
Hydrographic Survey

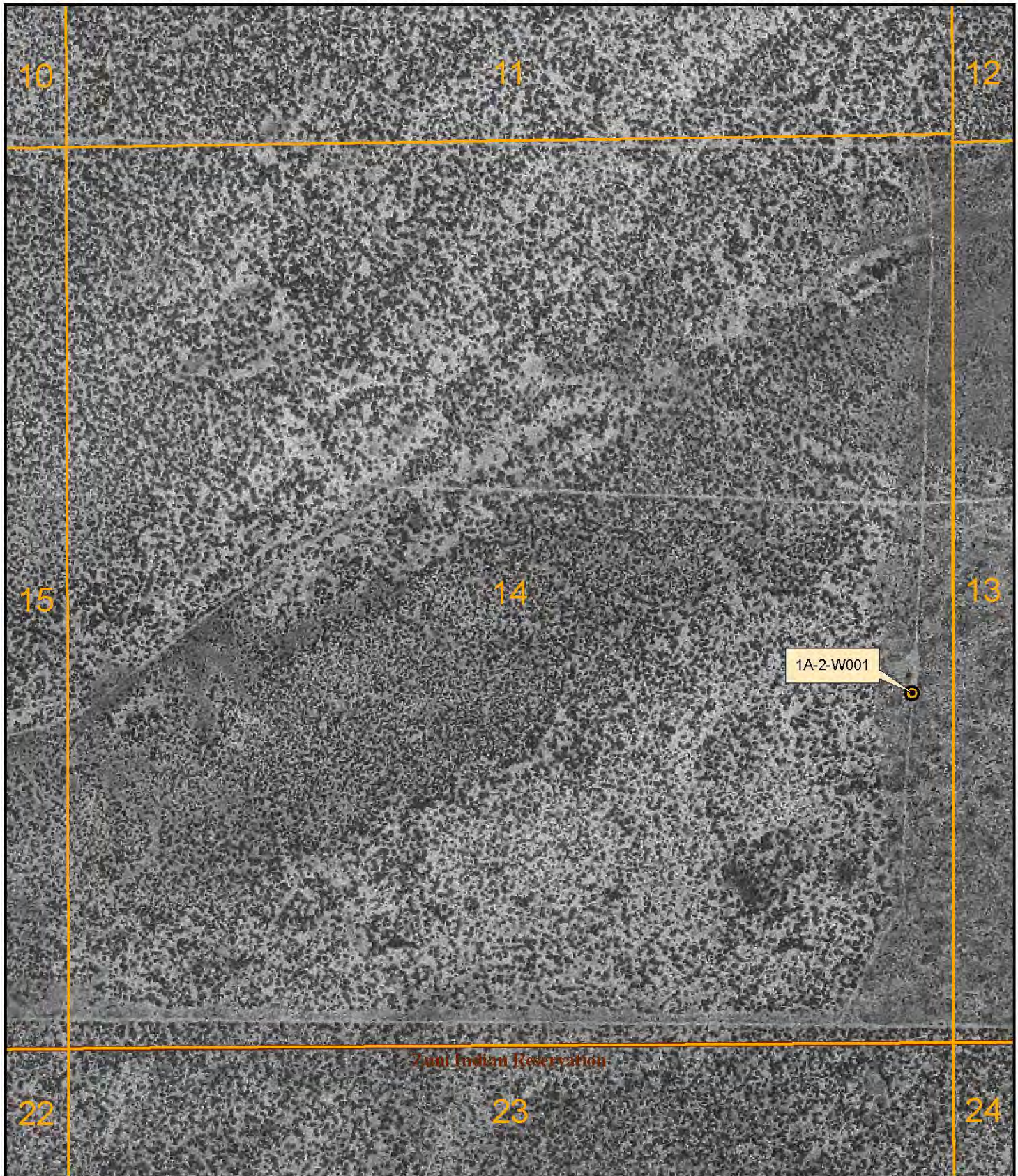
Subfile Number: ZRB-1-0075 Consolidated
PLSS: S14, T11N, R20W
Sheet 16 of 88



Natural Resources Consulting Engineers, Inc.

Fort Collins, CO Oakland, CA Asmara, ERITREA

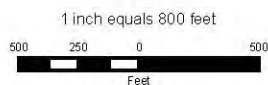
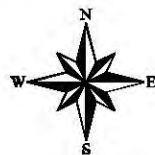
Project Manager: L. Niel Allen, P.E., Ph.D.



October 2006

LEGEND

-  Well
-  Town
-  Stock Pond
-  Basin Boundary
-  Sub-Area Boundary
-  Section Boundary



Zuni River Basin
Hydrographic Survey

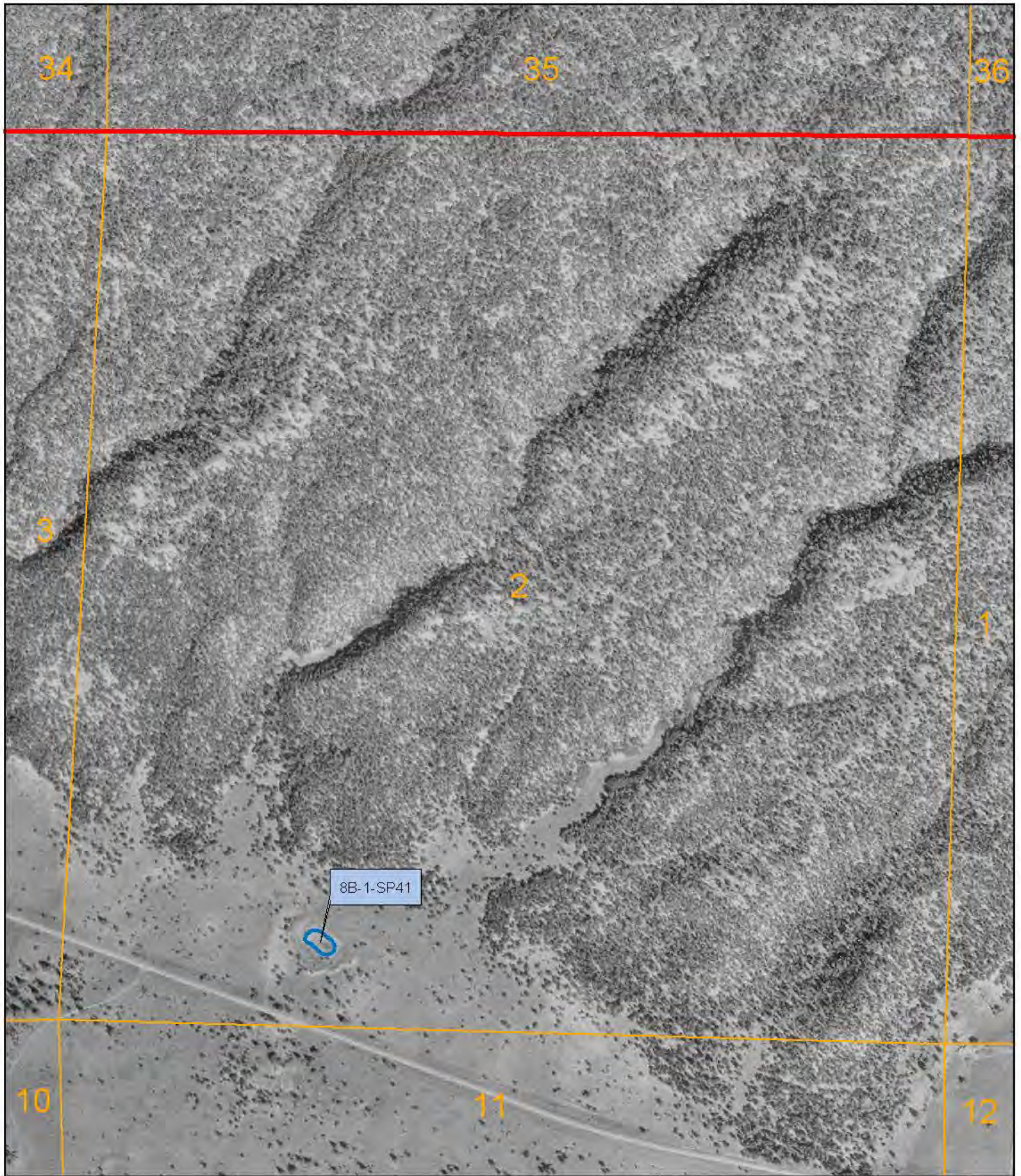
Subfile Number: ZRB-1-0075 Consolidated
PLSS: S14, T11N, R21W
Sheet 17 of 88



Natural Resources Consulting Engineers, Inc.

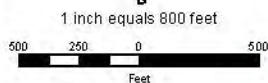
Fort Collins, CO Oakland, CA Asmara, ERITREA

Project Manager: L. Niel Allen, P.E., Ph.D.



LEGEND

-  Well
-  Town
-  Stock Pond
-  Sub-Area Boundary
-  Section Boundary



Zuni River Basin
Hydrographic Survey

Subfile Number: ZRB-1-0075 Consolidated
PLSS: S02, T09N, R13W
Sheet 18 of 88

December 2005



Natural Resources Consulting Engineers, Inc.

Fort Collins, CO Oakland, CA Asmara, ERITREA

Project Manager: L. Niel Allen, P.E., Ph.D.