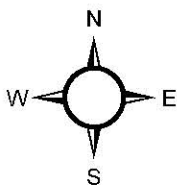
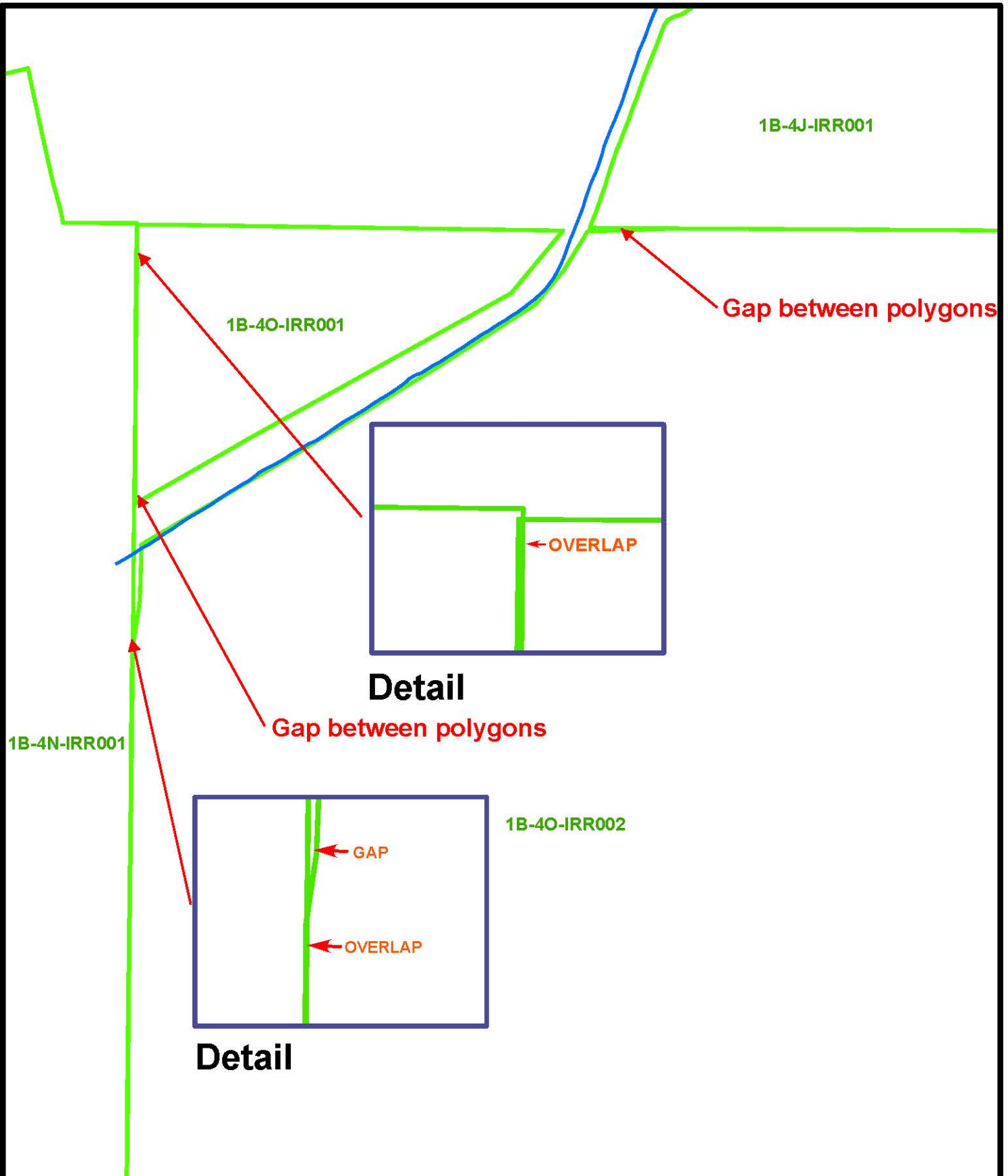


# **Appendix II.**

## **Map Figures**

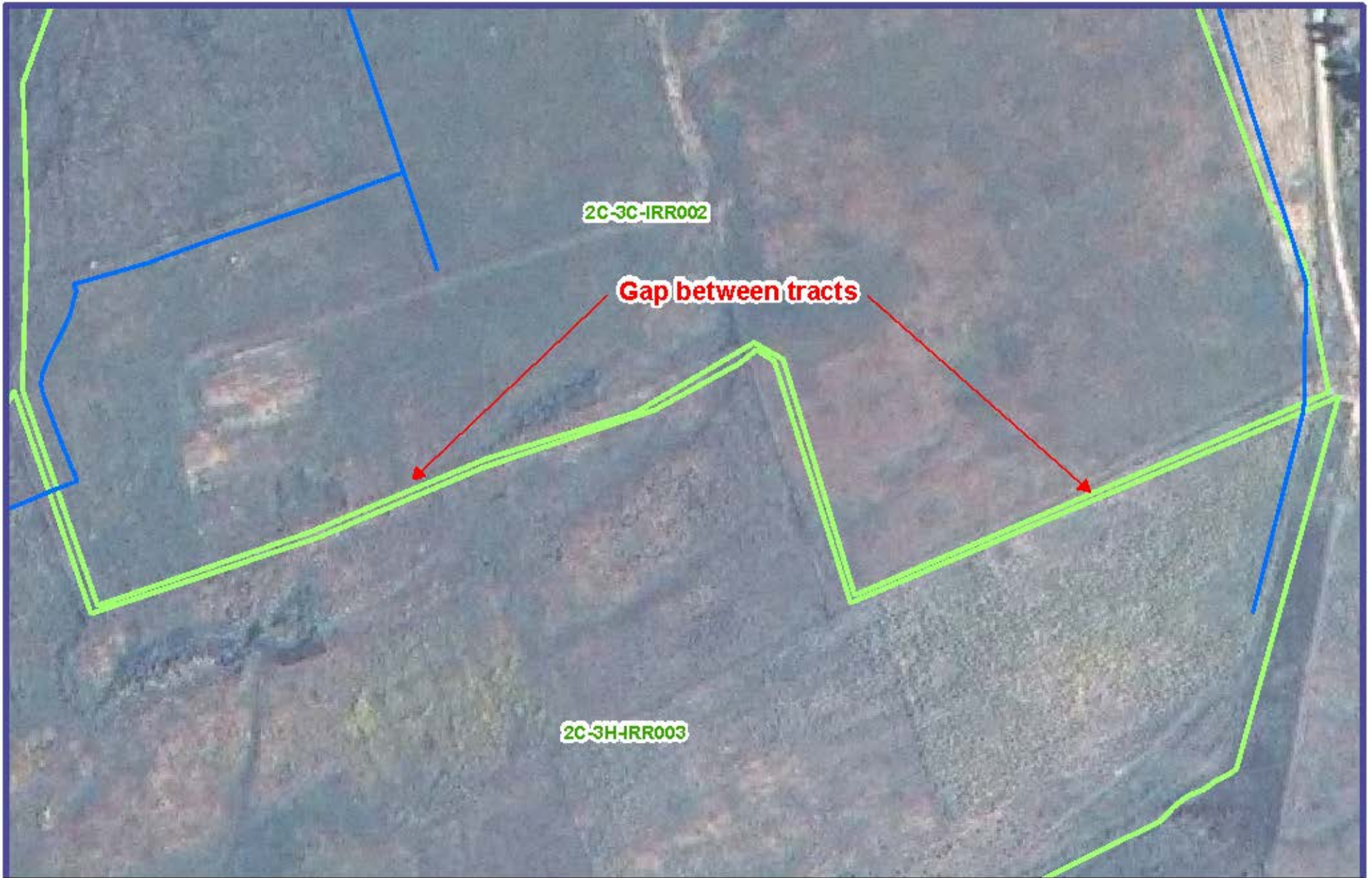


Scale 1"=300'

- Conveyances
- NRCE HIA Tracts

**Topology Errors  
between NRCE  
Mapped Tracts**

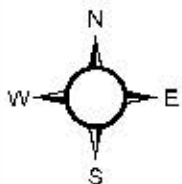
**Zuni Area  
Zuni Pueblo  
Figure 1**



2C-3C-IRR002

Gap between tracts

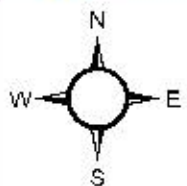
2C-3H-IRR003



Scale 1"=200'  
— Conveyances  
NRCE HIA Tracts

2005 Imagery  
Gap between  
NRCE Mapped  
Tracts

Figure2  
Nutria Area  
Zuni Pueblo



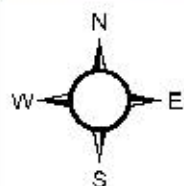
Scale 1"=300'

— Conveyances

□ NRCE HIA Tracts

2005 Imagery  
Gap between  
NRCE Mapped  
Tracts

**Figure 3**  
**Nutria Area**  
**Zuni Pueblo**



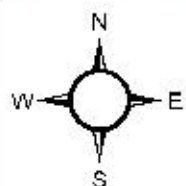
Scale 1"=200'

— Conveyances

□ NRCE HI Tracts

2005 Imagery  
Gap Between  
NRCE Mapped  
Tracts

Figure 4  
Zuni Area  
Zuni Pueblo



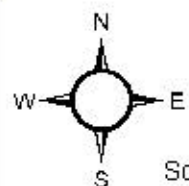
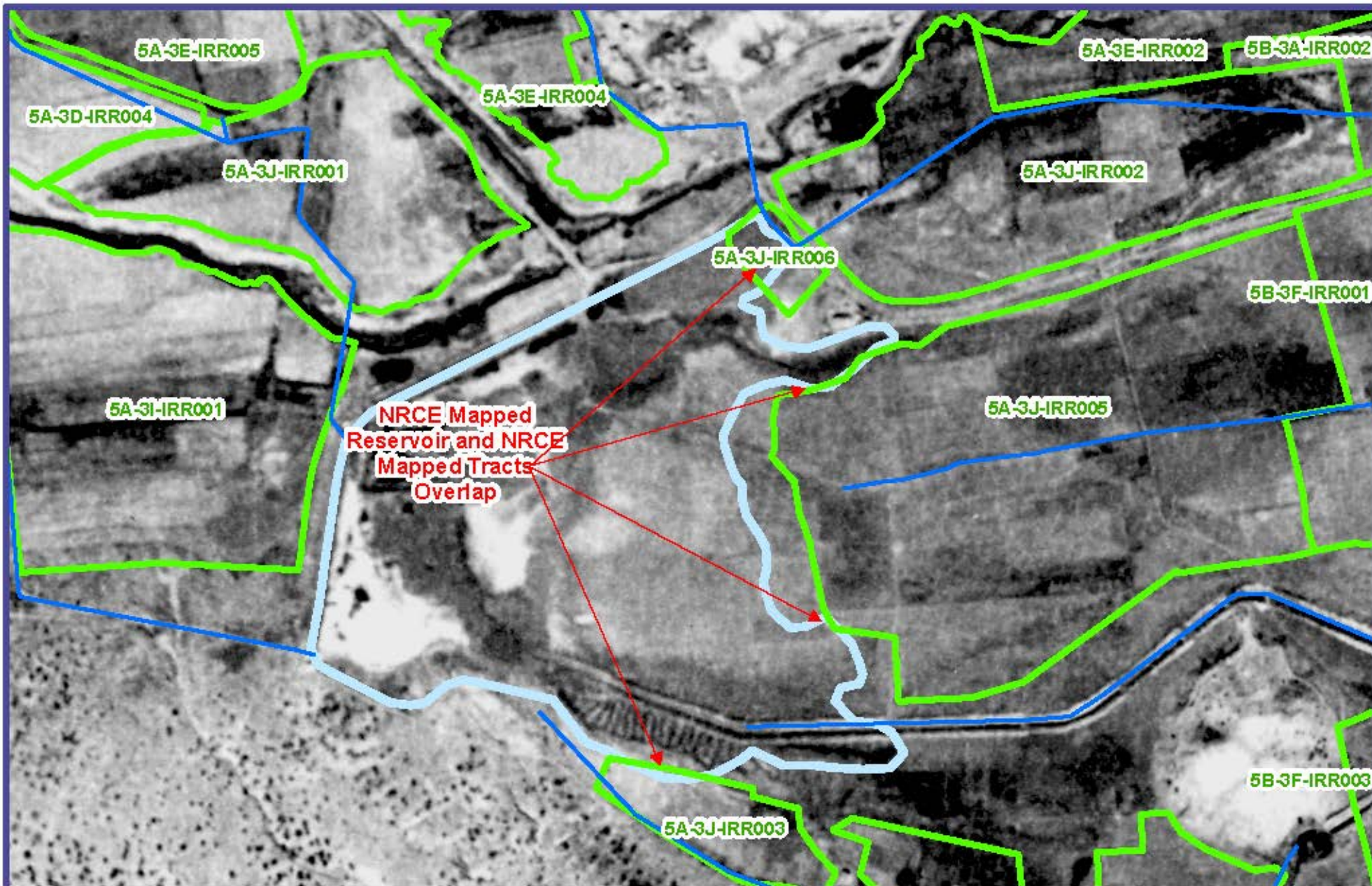
Scale 1"=200'

— Conveyances

□ NRCE HIA Tracts

2005 Imagery  
Out Area between  
NRCE Mapped  
Tracts

**Figure 5**  
**Nutria Area**  
**Zuni Pueblo**

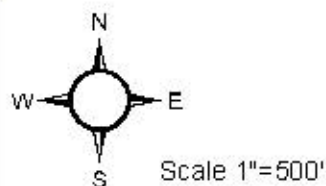
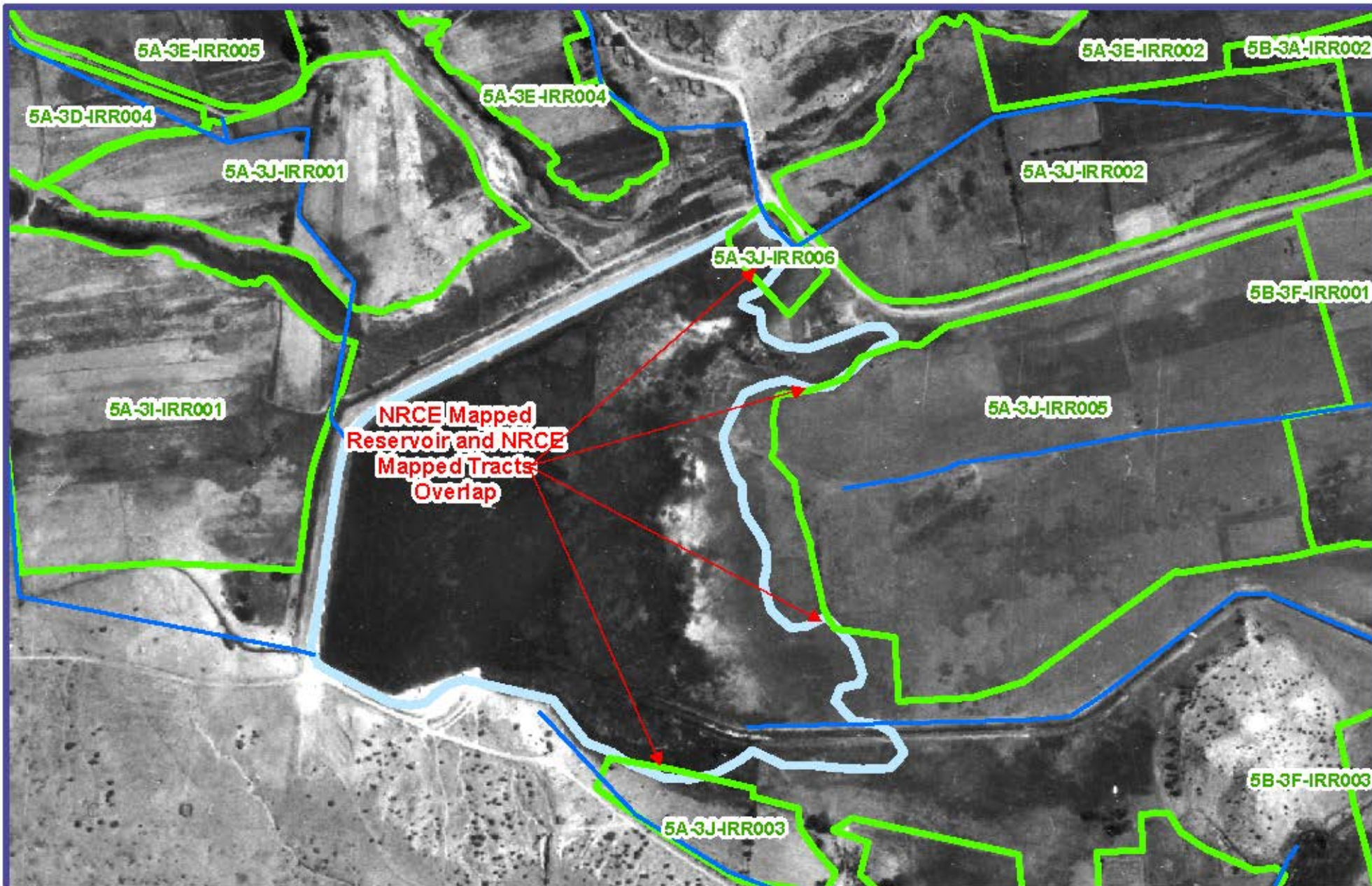


Scale 1"=500'

- Conveyances
- NRCE HIA Tracts
- NRCE Reservoirs

1935 Imagery  
NRCE Mapped  
Tracts & Reservoir  
Overlap

**Figure 6**  
**Ojo Caliente Area**  
**Zuni Pueblo**



- Conveyances
- NRCE HIA Tracts
- NRCE Reservoirs

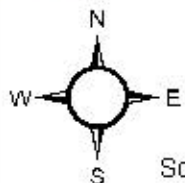
1970 Imagery  
 NRCE Mapped  
 Tracts & Reservoir  
 Overlap

**Figure 7**  
**Ojo Caliente Area**  
**Zuni Pueblo**





**NRCE Mapped  
Reservoir and NRCE  
Mapped Tracts  
Overlap**

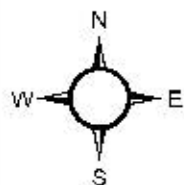
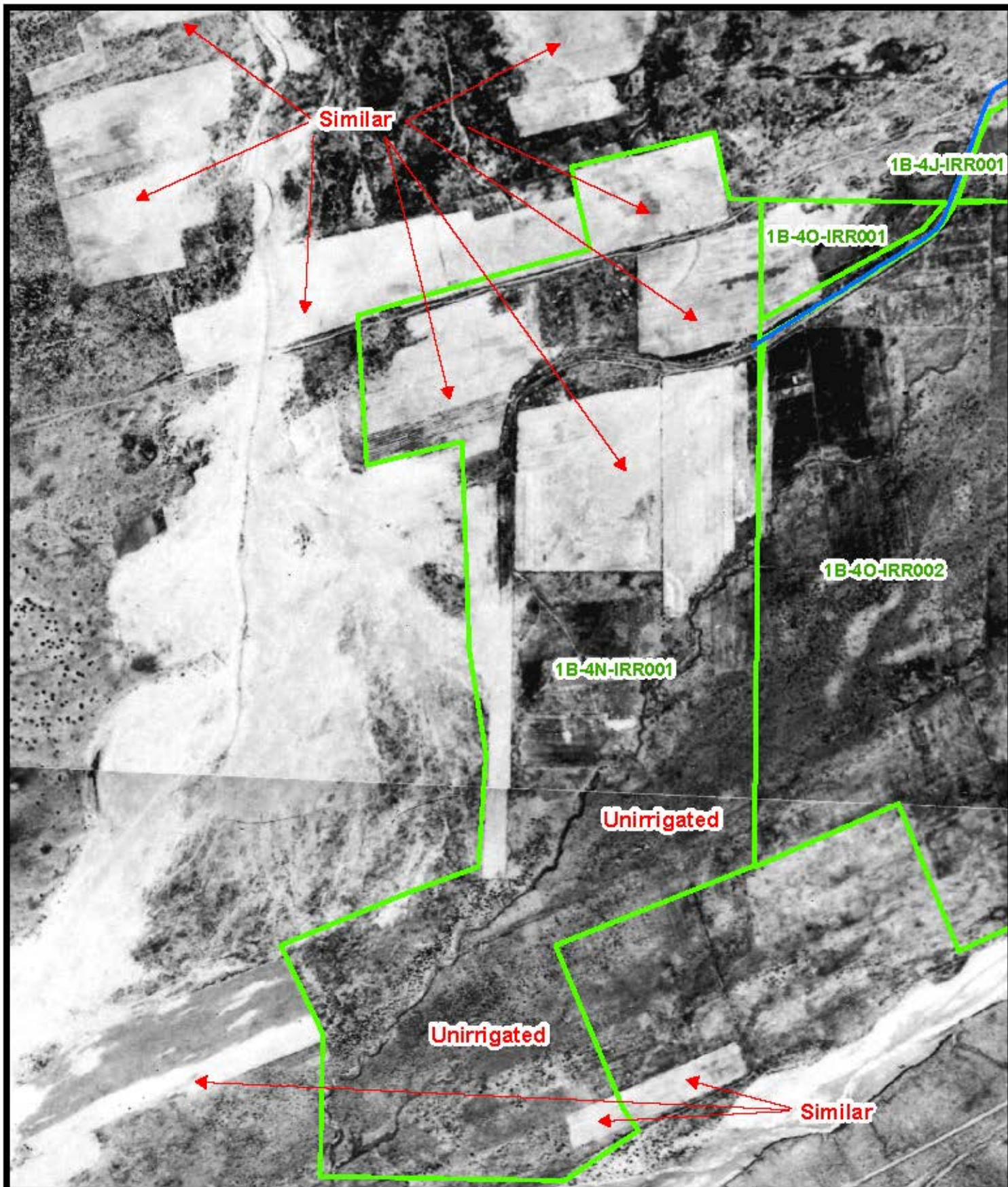


Scale 1"=500'

- Conveyances
- NRCE HIA Tracts
- NRCE Reservoirs

**2005 Imagery  
NRCE Mapped  
Tracts & Reservoir  
Overlap**

**Figure 8  
Ojo Caliente Area  
Zuni Pueblo**



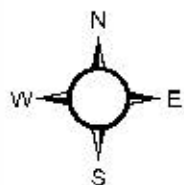
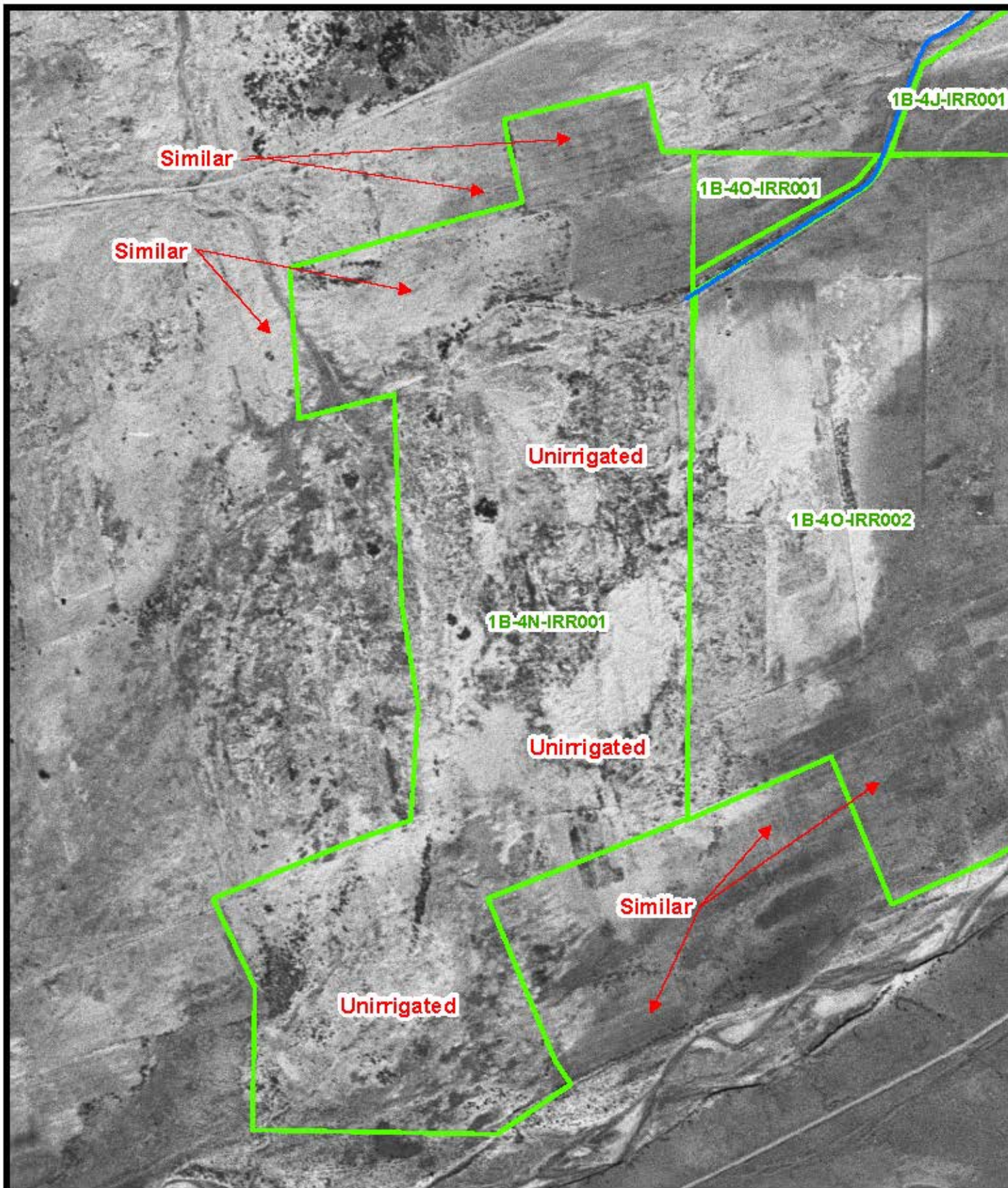
Scale 1"=700'

— Conveyances

□ NRCE HIA Tracts

1935 Imagery  
Native Land &  
Similar Tracts

**Figure 9**  
**Zuni Area**  
**Zuni Pueblo**



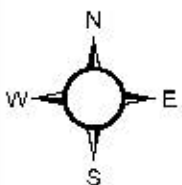
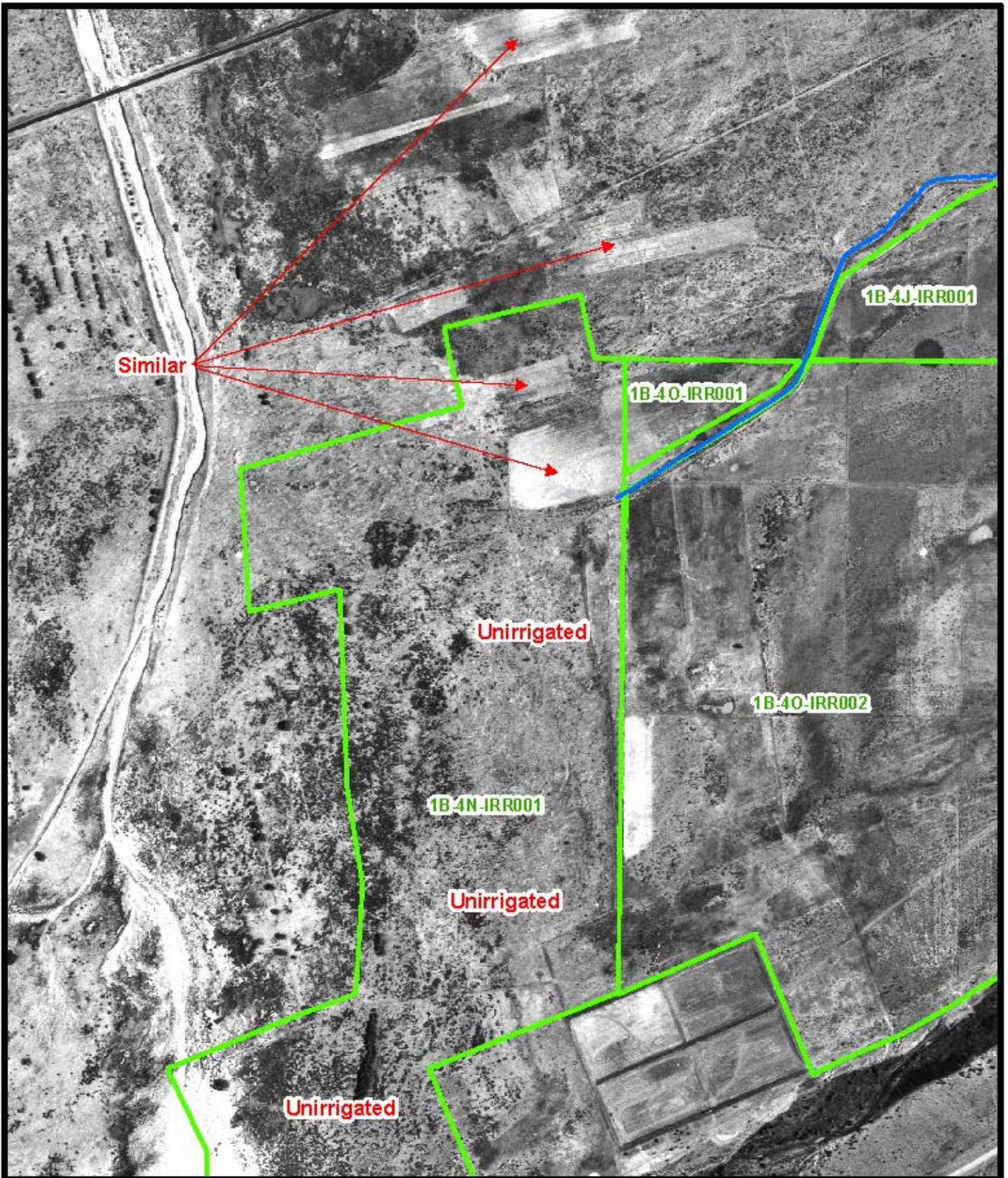
Scale 1"= 700'

— Conveyances

□ NRCE HIA Tracts

**1954 Imagery  
Native Land &  
Similar Tracts**

**Figure 10  
Zuni Area  
Zuni Pueblo**



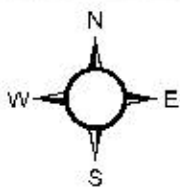
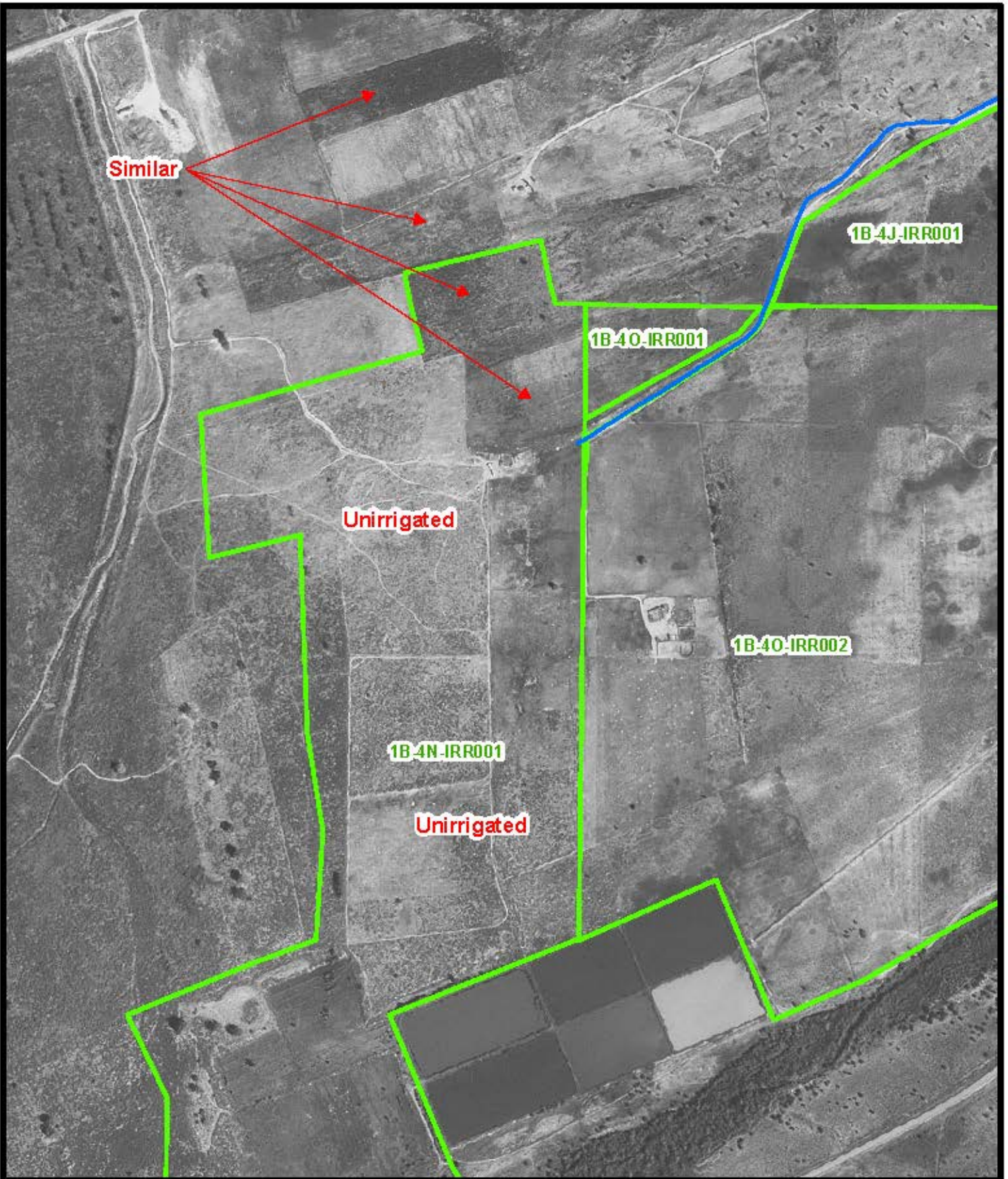
Scale 1"=700'

— Conveyances

□ NRCE HIA Tracts

**1970 Imagery  
Native Land &  
Similar Tracts**

**Figure 11  
Zuni Area  
Zuni Pueblo**



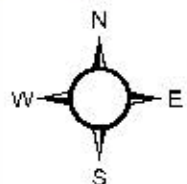
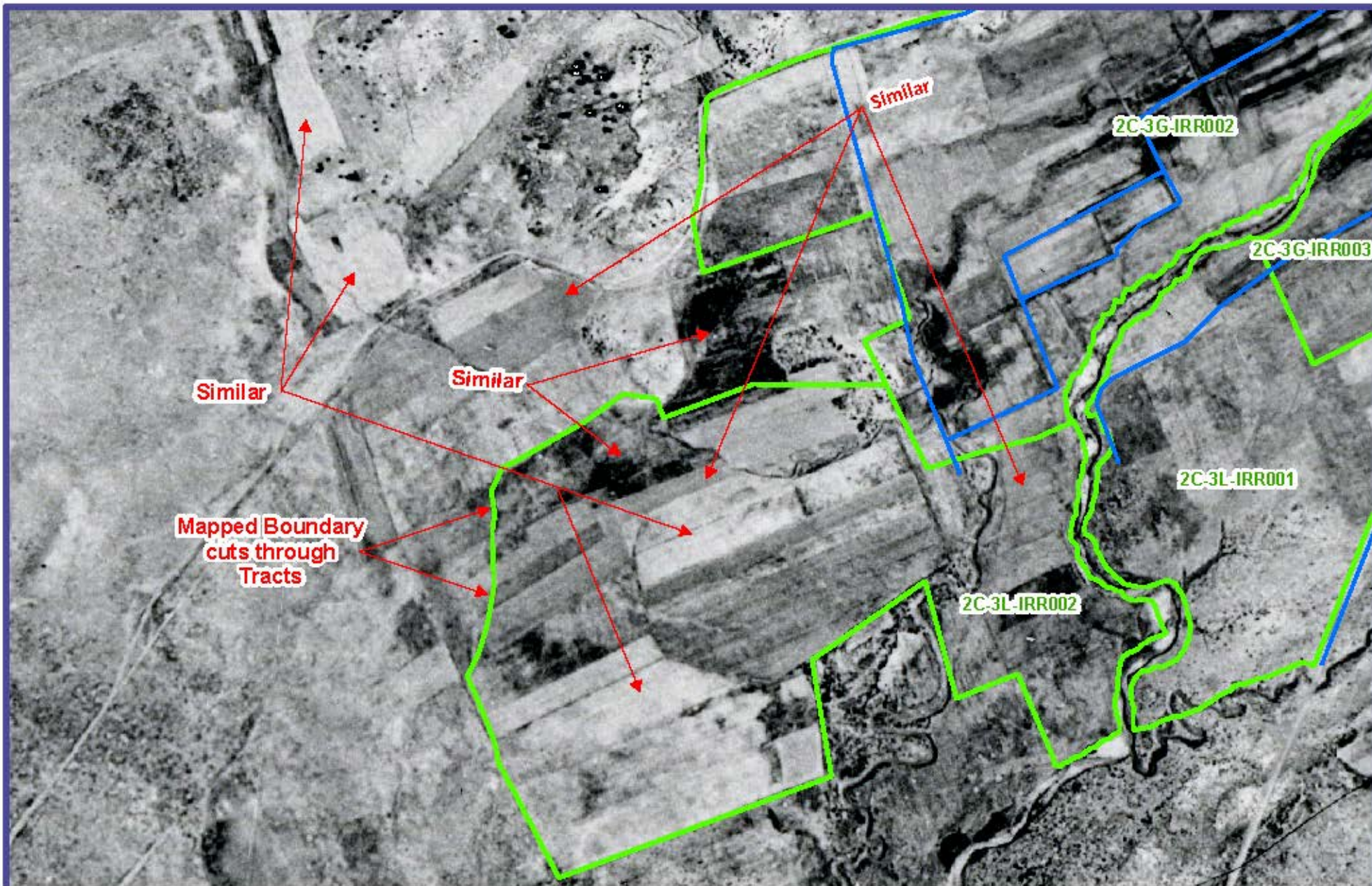
Scale 1"=700'

— Conveyances

□ NRCE HIA Tracts

**1996 Imagery  
Unirrigated Land  
& Similar Tracts**

**Figure 12  
Zuni Area  
Zuni Pueblo**



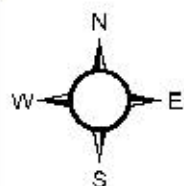
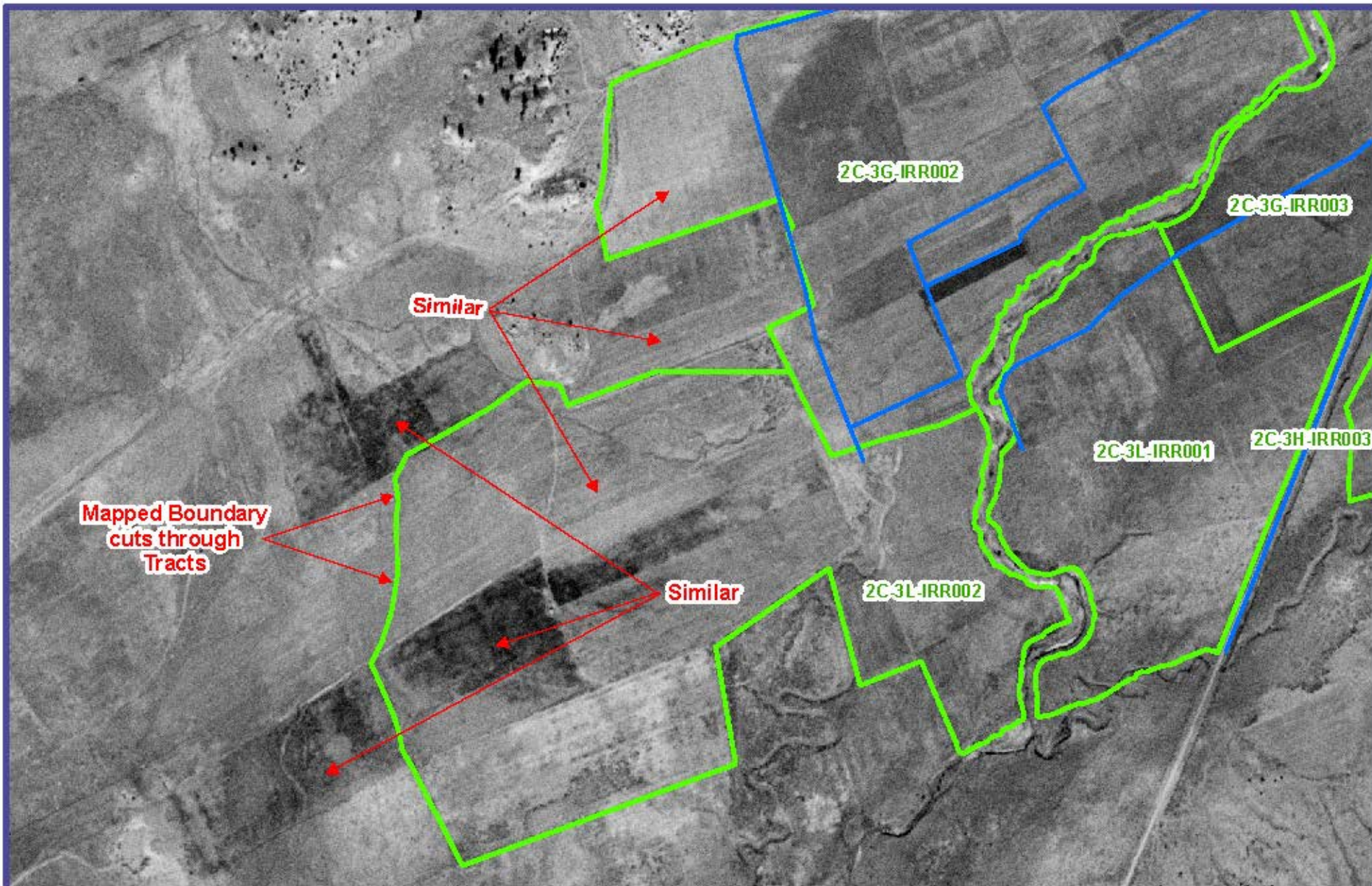
Scale 1"=500'

— Conveyances

□ NRCE HIA Tracts

1935 Imagery  
Similar Appearing  
Tracts

**Figure 13**  
**Nutria Area**  
**Zuni Pueblo**

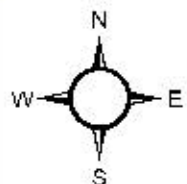


Scale 1"=500'

- Conveyances
- NRCE HIA Tracts

1954 Imagery  
Similar Appearing  
Tracts

**Figure 14**  
**Nutria Area**  
**Zuni Pueblo**



Scale 1"=500'

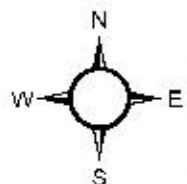
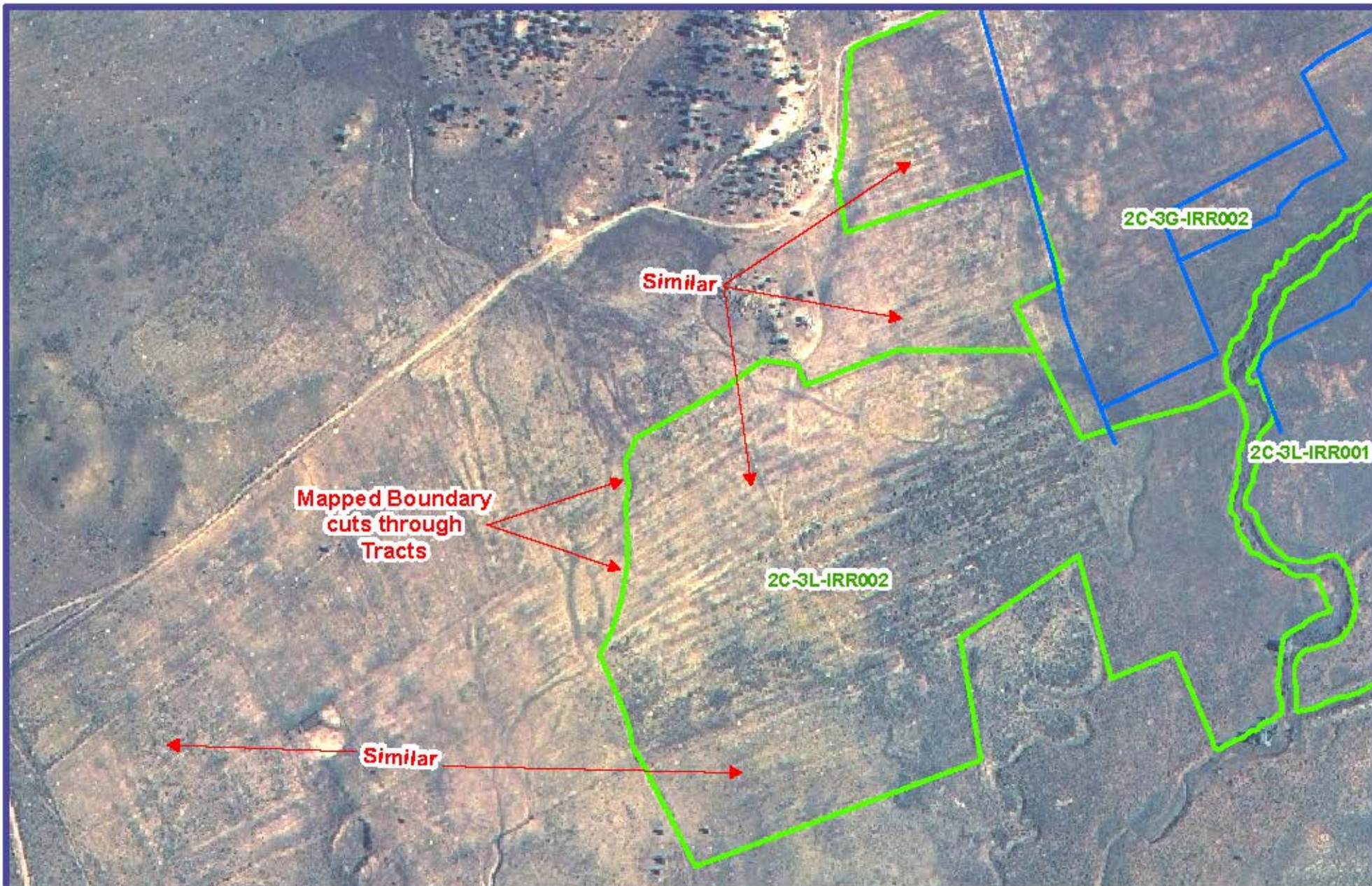
— Conveyances

▭ NRCE HIA Tracts

1970 Imagery  
Similar Appearing  
Tracts


**Figure 15**  
**Nutria Area**  
**Zuni Pueblo**





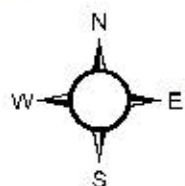
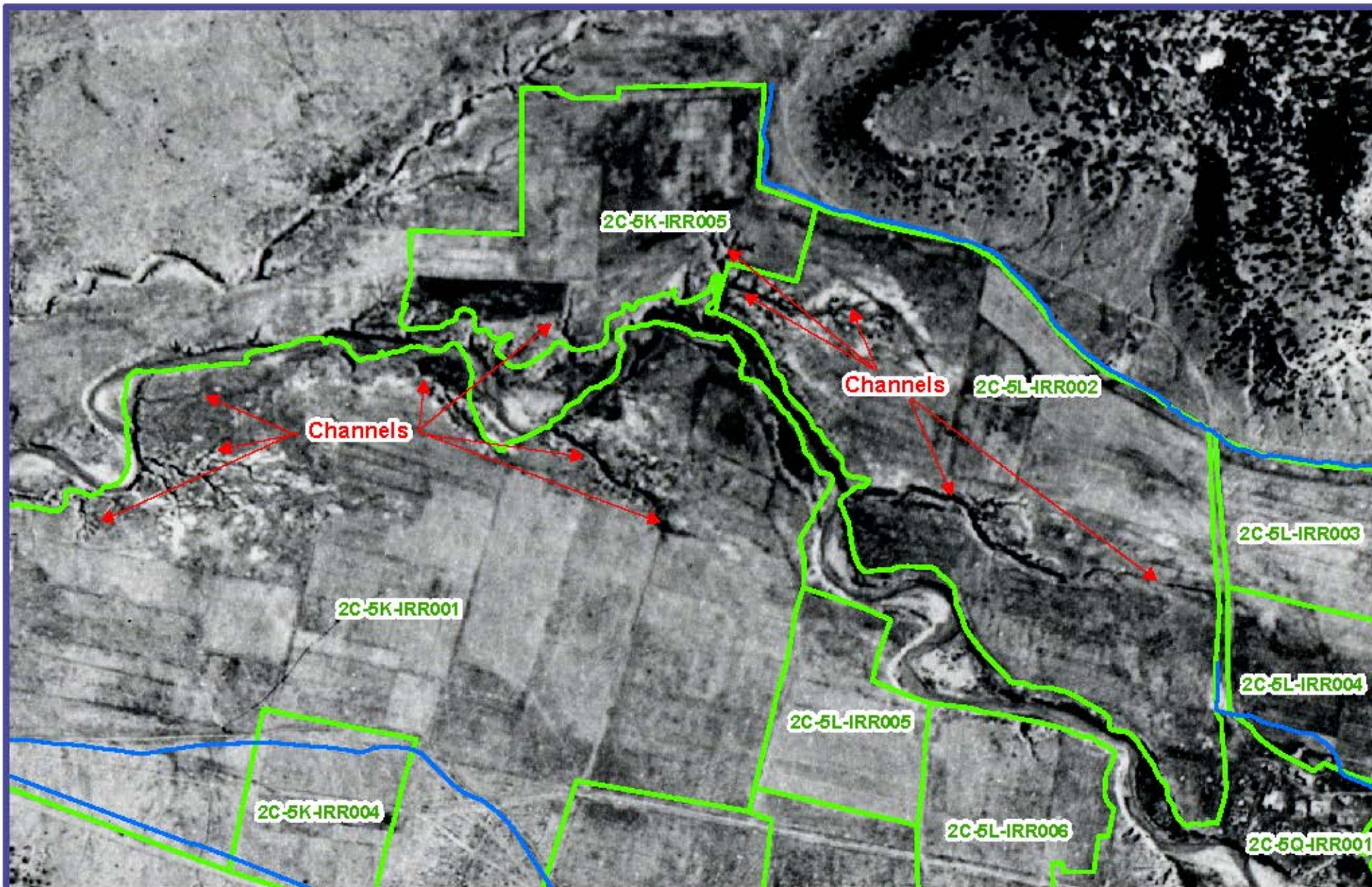
Scale 1"=500'

 Conveyances

 NRCE HIA Tracts

2005 Imagery  
Similar Appearing  
Tracts

**Figure 16**  
**Nutria Area**  
**Zuni Pueblo**



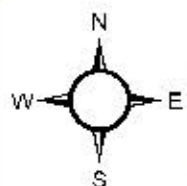
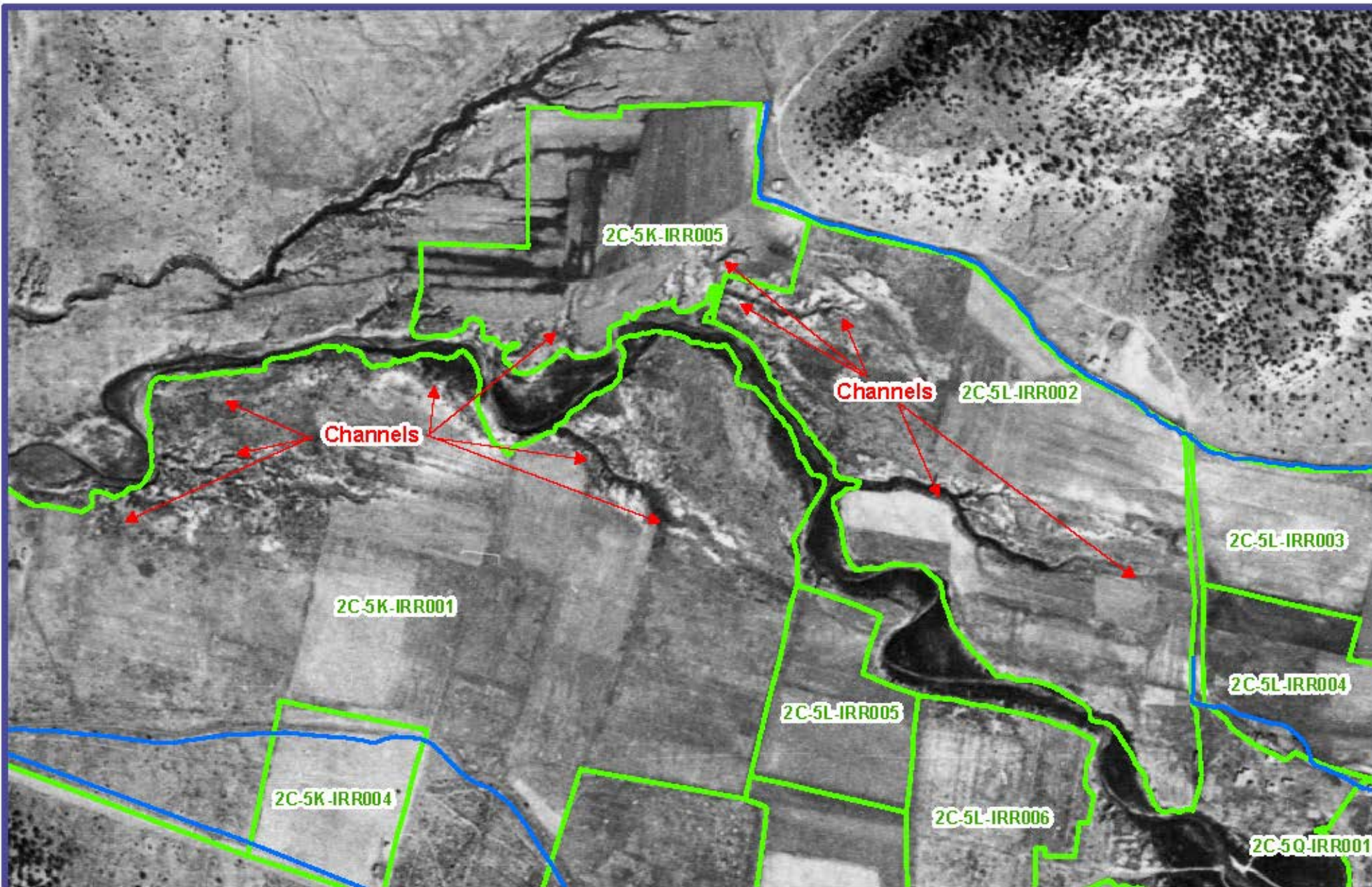
Scale 1"=500'

— Conveyances

□ NRCE HIA Tracts

1935 Imagery  
Channels Inside  
NRCE Tracts

**Figure 17**  
**Pescado Area**  
**Zuni Pueblo**



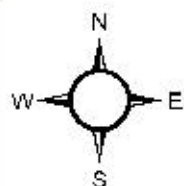
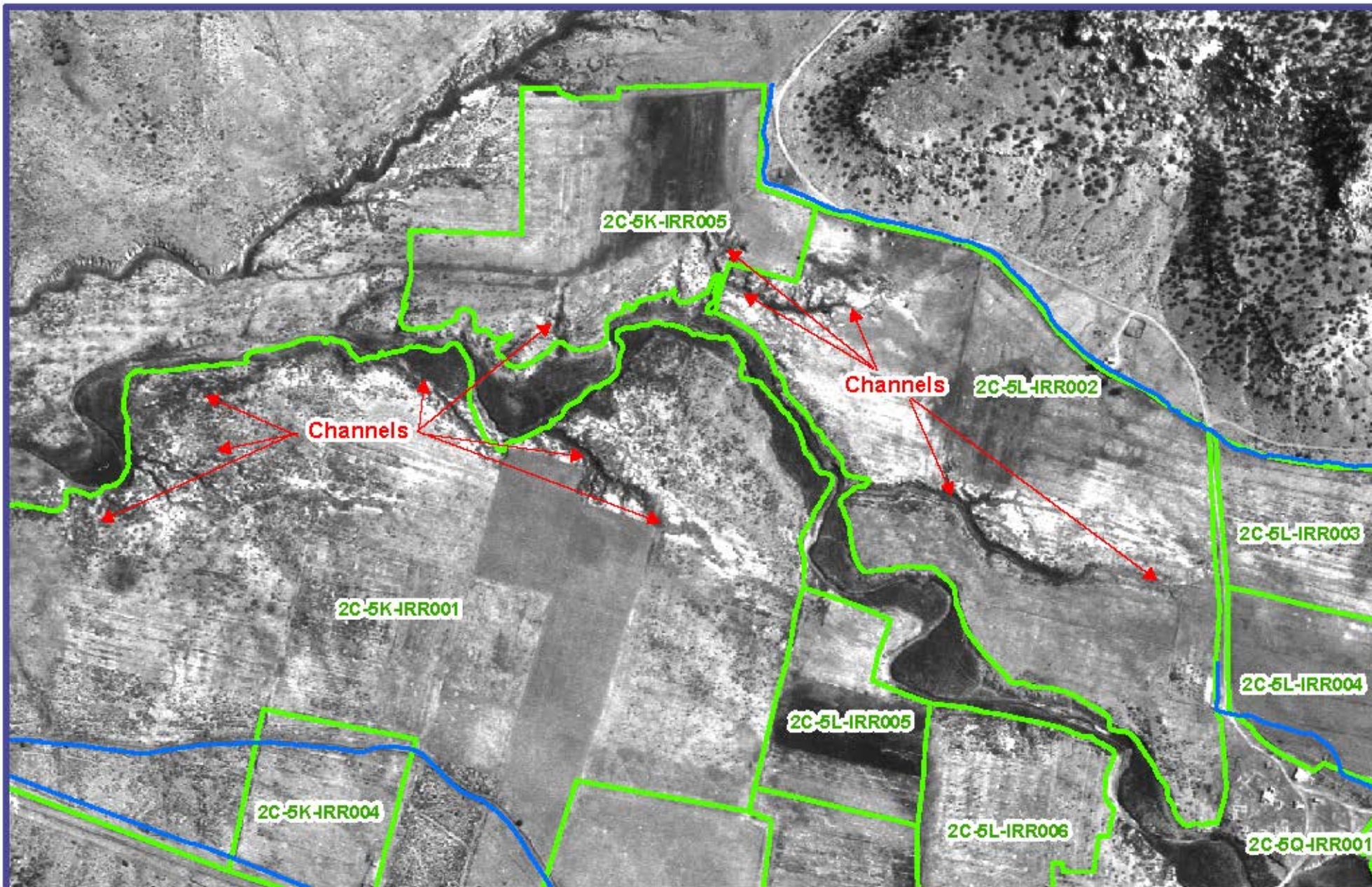
Scale 1"=500'

— Conveyances

□ NRCE HIA Tracts

1954 Imagery  
Channels Inside  
NRCE Tracts

**Figure 18**  
**Pescado Area**  
**Zuni Pueblo**

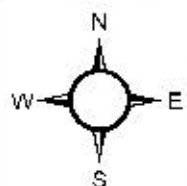
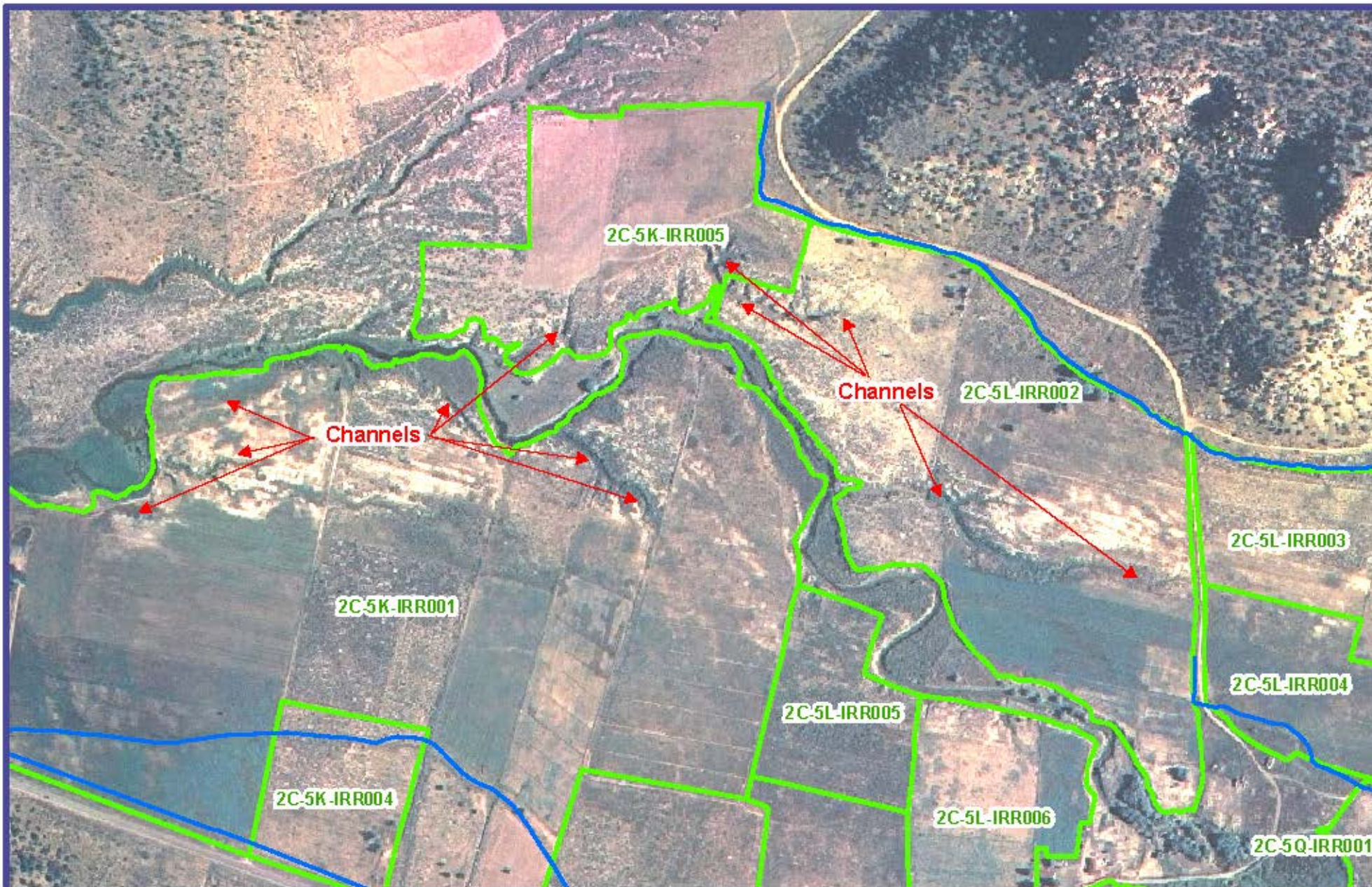


Scale 1"=500'

- Conveyances
- NRCE HIA Tracts

1970 Imagery  
Channels Inside  
NRCE Tracts

**Figure 19**  
**Pescado Area**  
**Zuni Pueblo**



Scale 1"=500'

— Conveyances

□ NRCE HIA Tracts

2005 Imagery  
Channels Inside  
NRCE Tracts

**Figure 20**  
**Pescado Area**  
**Zuni Pueblo**