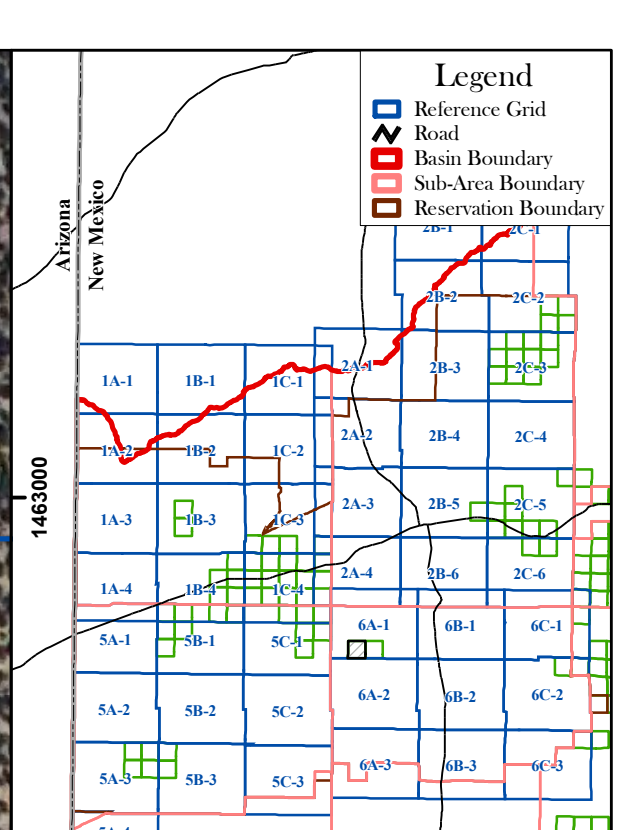
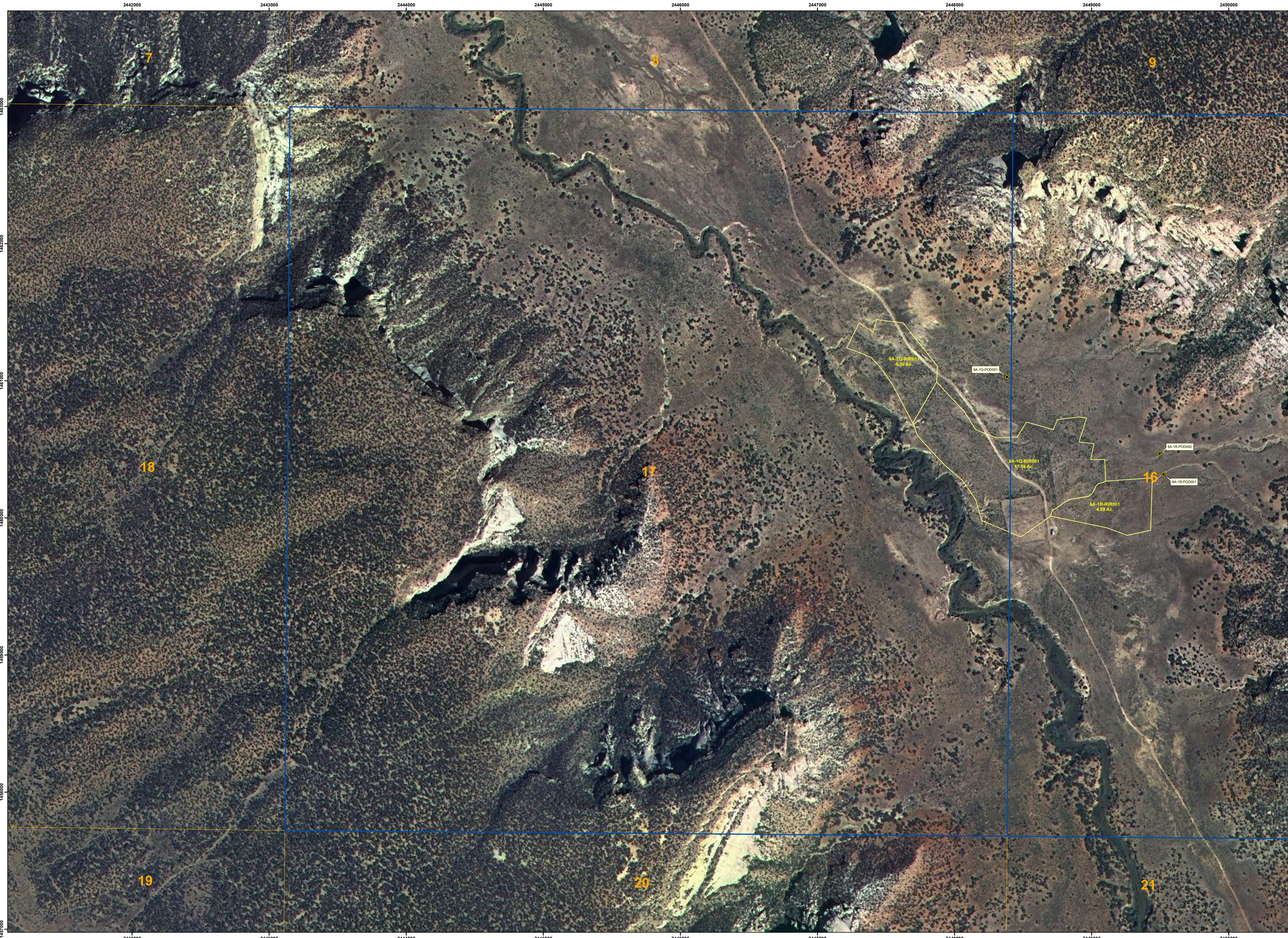


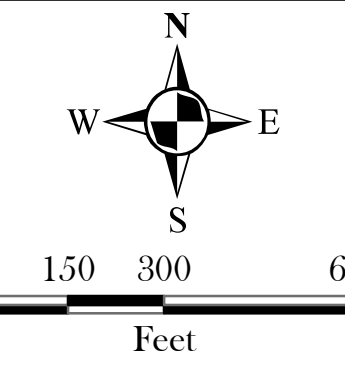
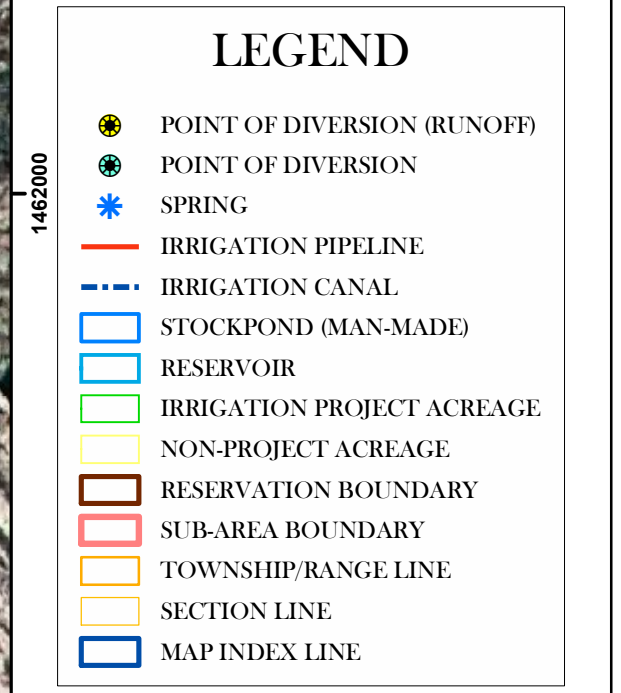
2442000 2443000 2444000 2445000 2446000 2447000 2448000 2449000 2450000

2442000 2443000 2444000 2445000 2446000 2447000 2448000 2449000 2450000

1462000
1463000
1464000
1465000
1466000
1467000
1468000
1469000
1470000



INDEX



March 2007

Labels that are truncated appear on an adjacent map.
Map is displayed in New Mexico State Plane Coordinate System, West Zone, NAD 1983.
Background Sources:
Aerial photography exposed July, 2001 by New Mexico Aerial Surveys, Inc. of Albuquerque, New Mexico.
Digital Orthophoto Quarter-Quadrangles were produced by the New Mexico Geospatial Data Acquisition Coordination Committee (2005)
Section, Township, and Range lines originated from the Bureau of Land Management's (BLM) Geographic Coordinate Data Base (GCDB), received from EnviroLogic, Inc.

Township: 9 North Range: 18 West

Zuni River Basin Hydrographic Survey Irrigated Acreage - Zuni Indian Reservation Map 6A-1Q 1" = 300'

Natural Resources Consulting Engineers, Inc.
Fort Collins, CO Oakland, CA Asmara, ERTREA
Project Manager:
L. Niel Allen, P.E., Ph.D.

