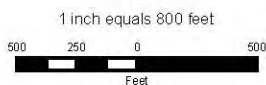


October 2006

**LEGEND**

-  Well
-  Town
-  Stock Pond
-  Basin Boundary
-  Sub-Area Boundary
-  Section Boundary



Zuni River Basin  
Hydrographic Survey

Subfile Number: ZRB-1-0075 Consolidated  
PLSS: S16, T10N, R15W  
Sheet 1 of 88

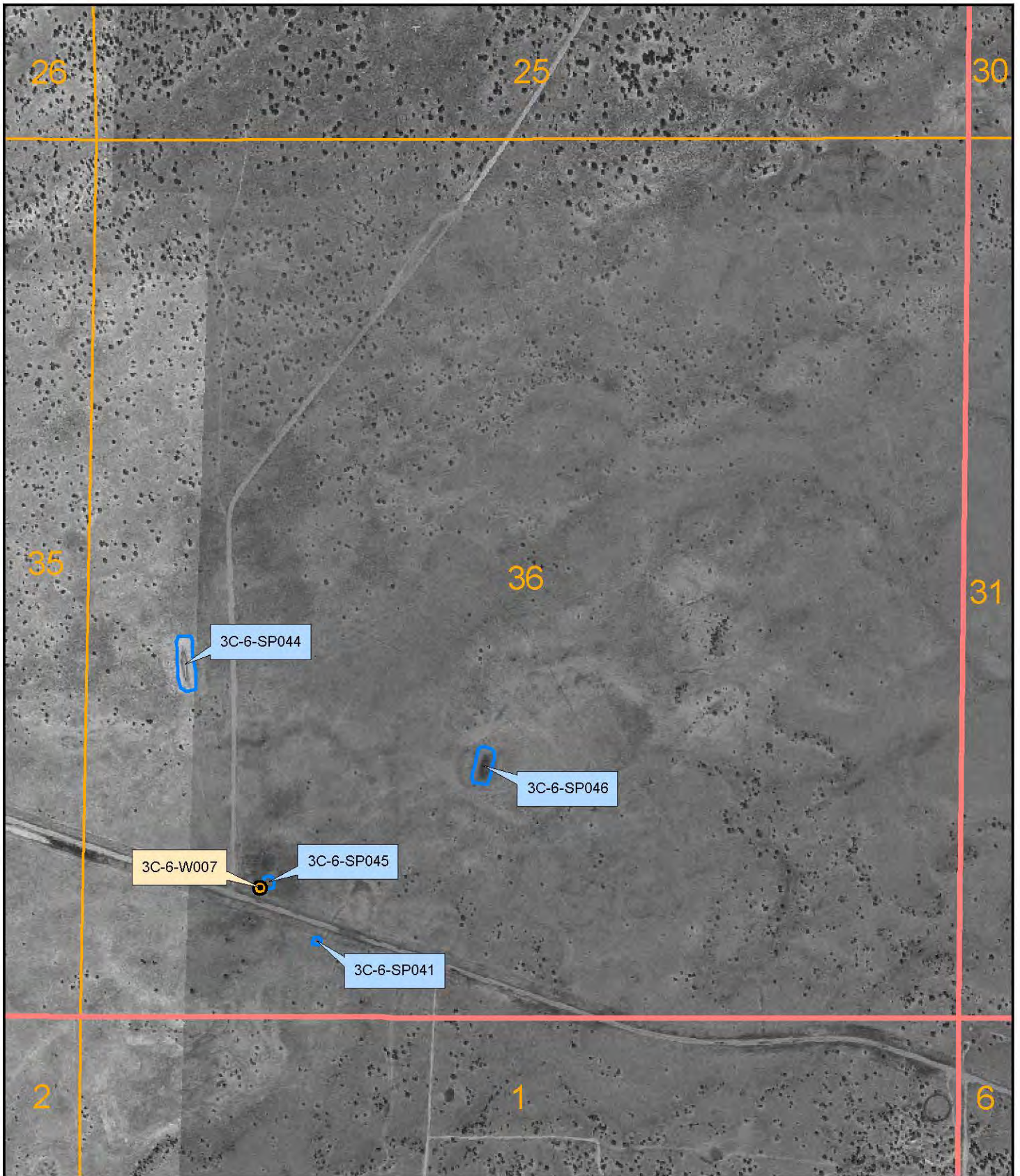


**Natural Resources Consulting Engineers, Inc.**

Fort Collins, CO    Oakland, CA    Asmara, ERITREA

Project Manager: L. Niel Allen, P.E., Ph.D.

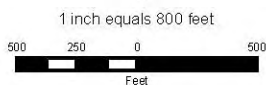
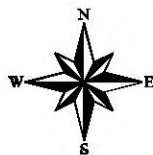




October 2006

**LEGEND**

-  Well
-  Town
-  Stock Pond
-  Basin Boundary
-  Sub-Area Boundary
-  Section Boundary



Zuni River Basin  
Hydrographic Survey

Subfile Number: ZRB-1-0075 Consolidated  
PLSS: S36, T10N, R15W  
Sheet 2 of 88

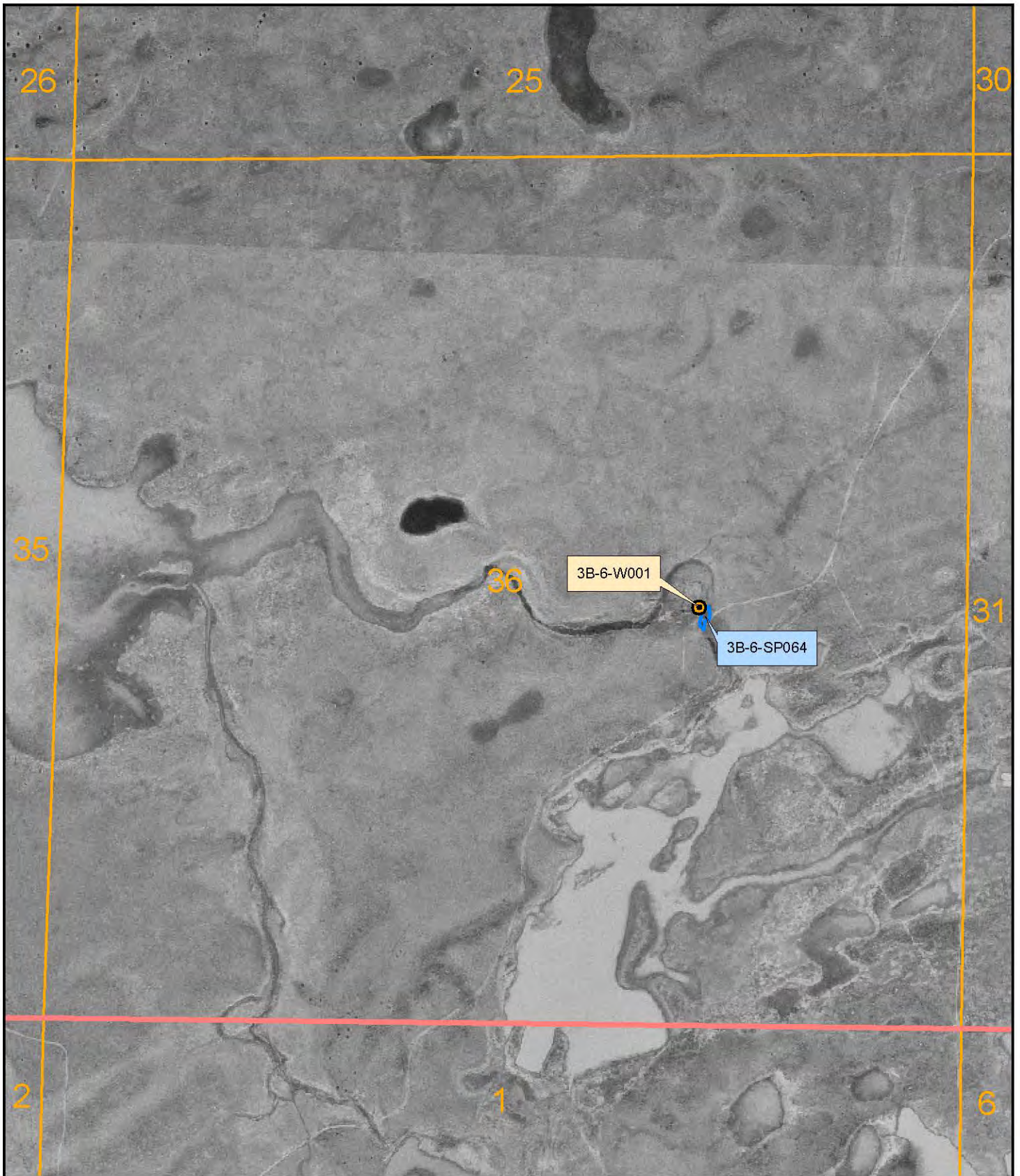


**Natural Resources Consulting Engineers, Inc.**

Fort Collins, CO    Oakland, CA    Asmara, ERITREA

Project Manager: L. Niel Allen, P.E., Ph.D.

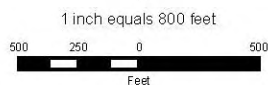




October 2006

**LEGEND**

-  Well
-  Town
-  Stock Pond
-  Basin Boundary
-  Sub-Area Boundary
-  Section Boundary



Zuni River Basin  
Hydrographic Survey

Subfile Number: ZRB-1-0075 Consolidated  
PLSS: S36, T10N, R16W  
Sheet 3 of 88

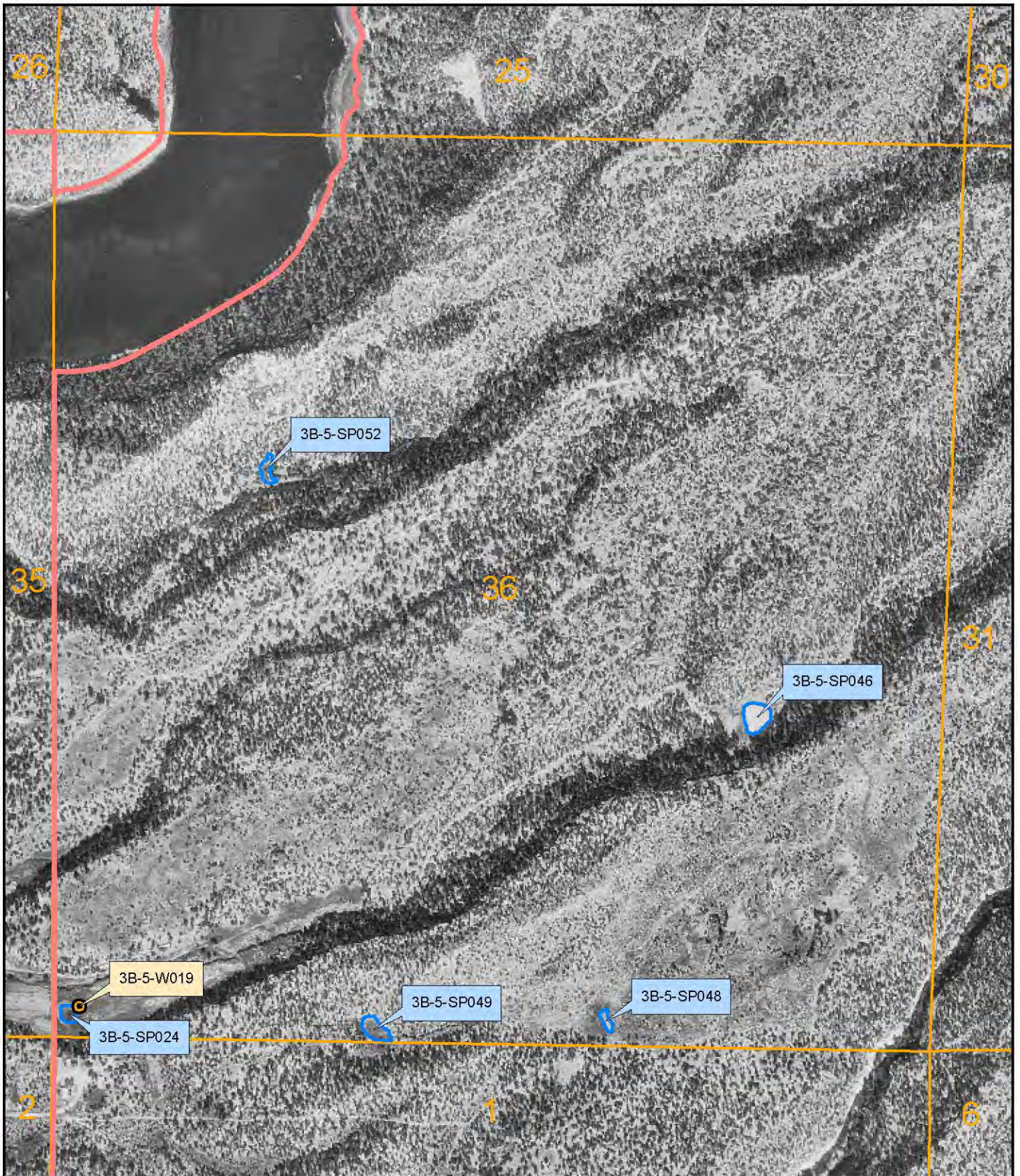


**Natural Resources Consulting Engineers, Inc.**

Fort Collins, CO    Oakland, CA    Asmara, ERITREA

Project Manager: L. Niel Allen, P.E., Ph.D.

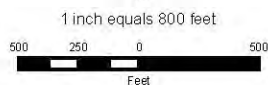
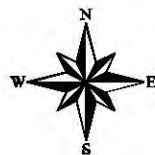




October 2006

**LEGEND**

-  Well
-  Town
-  Stock Pond
-  Basin Boundary
-  Sub-Area Boundary
-  Section Boundary



Zuni River Basin  
Hydrographic Survey

Subfile Number: ZRB-1-0075 Consolidated  
PLSS: S36, T11N, R16W  
Sheet 4 of 88

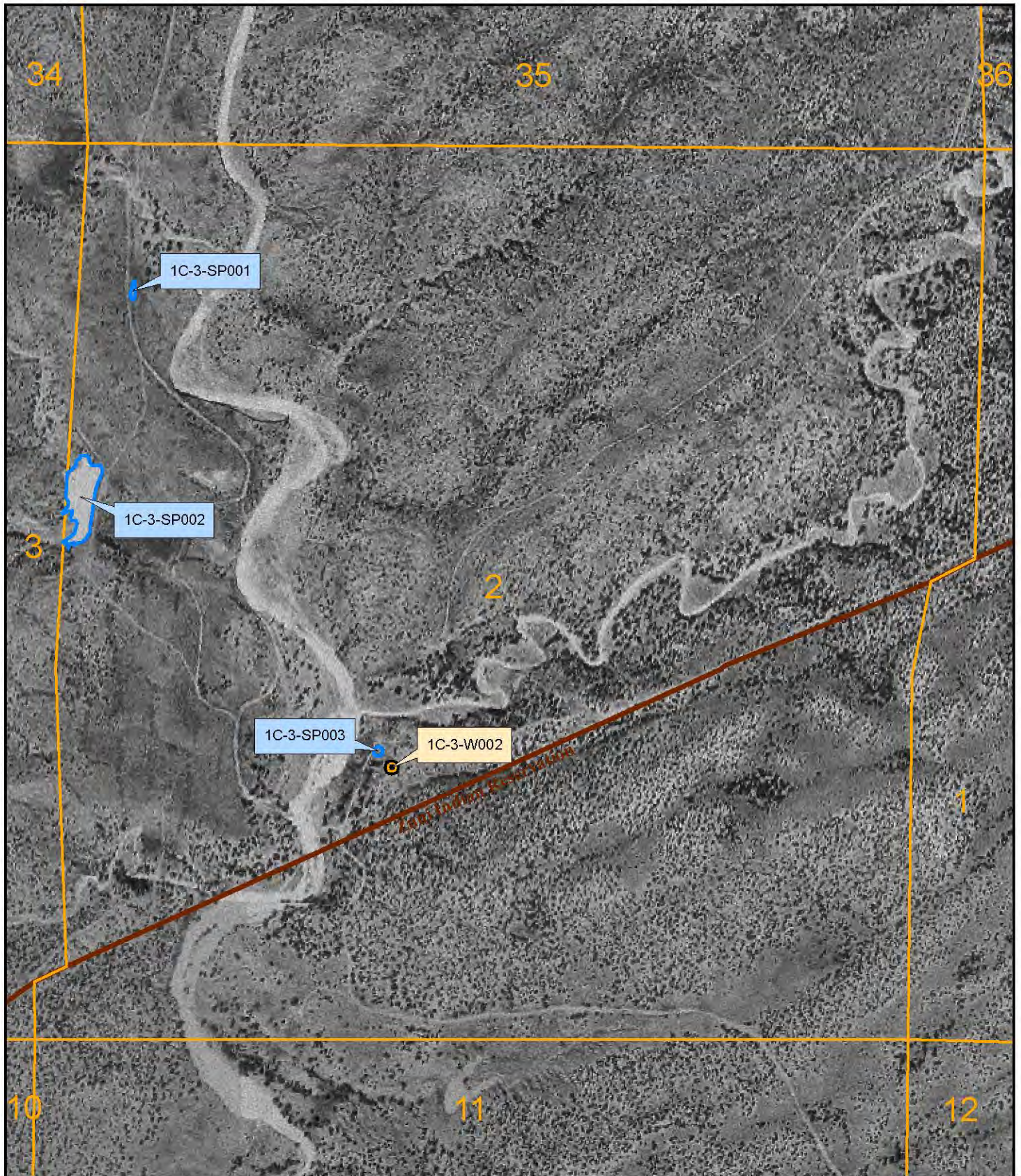


**Natural Resources Consulting Engineers, Inc.**

Fort Collins, CO    Oakland, CA    Asmara, ERITREA

Project Manager: L. Niel Allen, P.E., Ph.D.

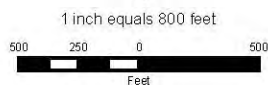
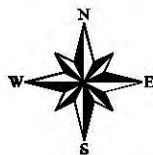




October 2006

**LEGEND**

-  Well
-  Town
-  Stock Pond
-  Basin Boundary
-  Sub-Area Boundary
-  Section Boundary



Zuni River Basin  
Hydrographic Survey

Subfile Number: ZRB-1-0075 Consolidated  
PLSS: S02, T10N, R19W  
Sheet 5 of 88

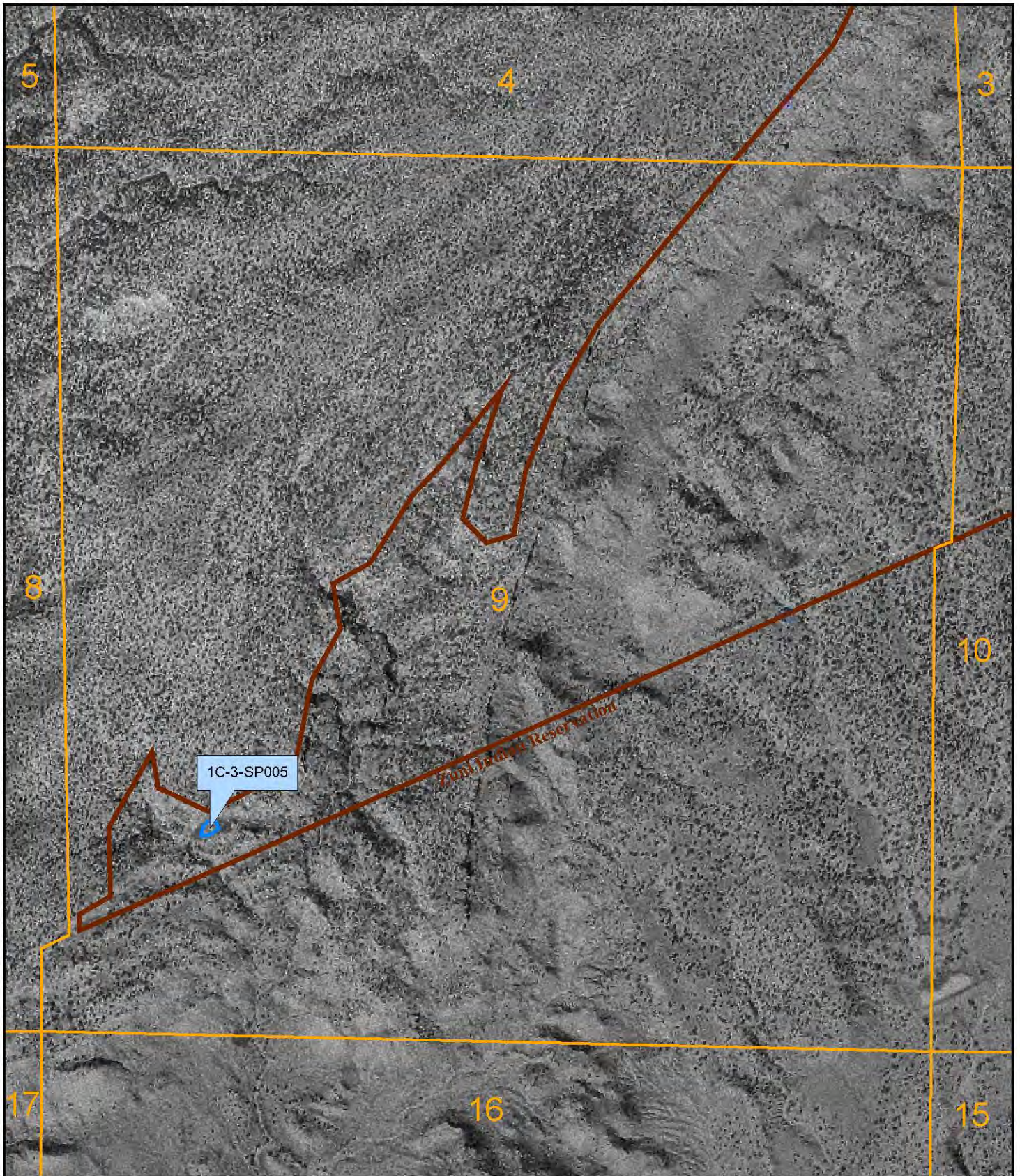


**Natural Resources Consulting Engineers, Inc.**

Fort Collins, CO    Oakland, CA    Asmara, ERITREA

Project Manager: L. Niel Allen, P.E., Ph.D.

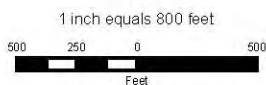
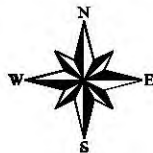




October 2006

**LEGEND**

-  Well
-  Town
-  Stock Pond
-  Basin Boundary
-  Sub-Area Boundary
-  Section Boundary



Zuni River Basin  
Hydrographic Survey

Subfile Number: ZRB-1-0075 Consolidated  
PLSS: S09, T10N, R19W  
Sheet 6 of 88



**Natural Resources Consulting Engineers, Inc.**

Fort Collins, CO    Oakland, CA    Asmara, ERITREA

Project Manager: L. Niel Allen, P.E., Ph.D.