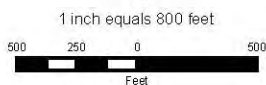


October 2006

**LEGEND**

-  Well
-  Town
-  Stock Pond
-  Basin Boundary
-  Sub-Area Boundary
-  Section Boundary



Zuni River Basin  
Hydrographic Survey

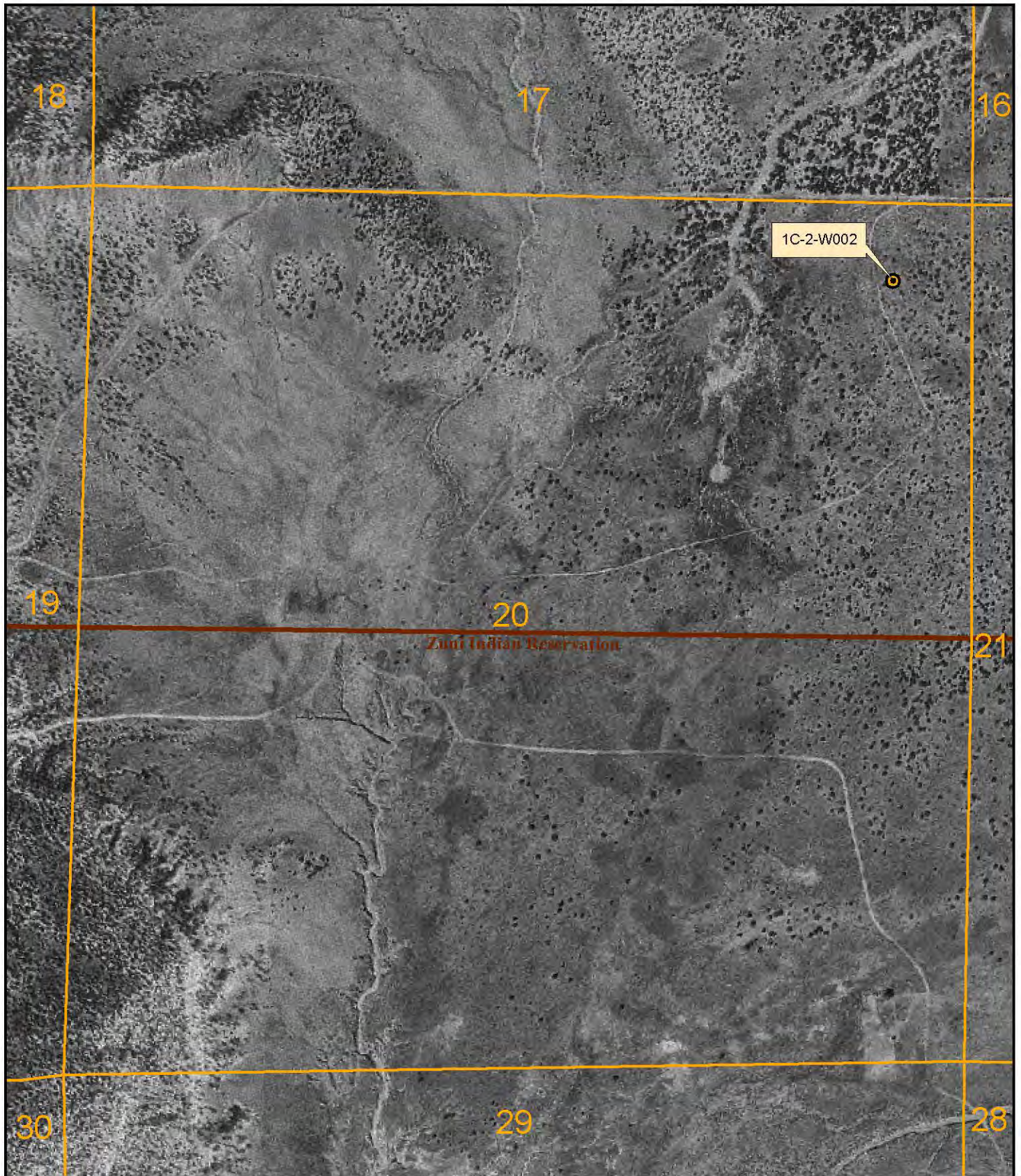
Subfile Number: ZRB-1-0075 Consolidated  
PLSS: S16, T11N, R19W  
Sheet 7 of 88



**Natural Resources Consulting Engineers, Inc.**

Fort Collins, CO    Oakland, CA    Asmara, ERITREA

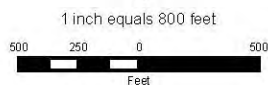
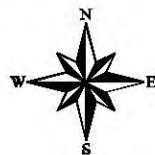
Project Manager: L. Niel Allen, P.E., Ph.D.



October 2006

**LEGEND**

-  Well
-  Town
-  Stock Pond
-  Basin Boundary
-  Sub-Area Boundary
-  Section Boundary



Zuni River Basin  
Hydrographic Survey

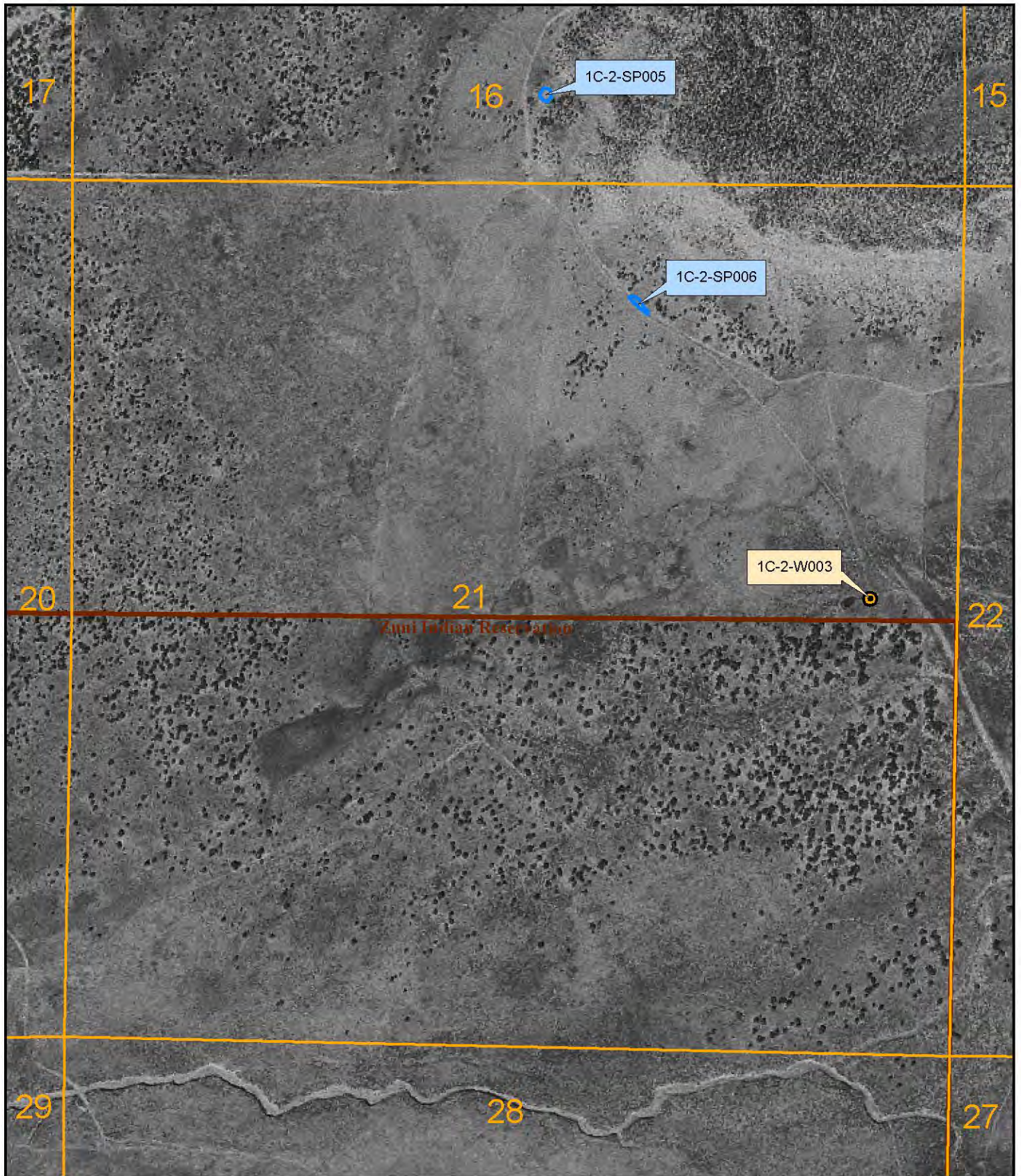
Subfile Number: ZRB-1-0075 Consolidated  
PLSS: S20, T11N, R19W  
Sheet 8 of 88



**Natural Resources Consulting Engineers, Inc.**

Fort Collins, CO    Oakland, CA    Asmara, ERITREA

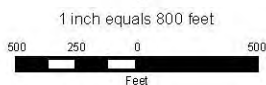
Project Manager: L. Niel Allen, P.E., Ph.D.



October 2006

**LEGEND**

-  Well
-  Town
-  Stock Pond
-  Basin Boundary
-  Sub-Area Boundary
-  Section Boundary



Zuni River Basin  
Hydrographic Survey

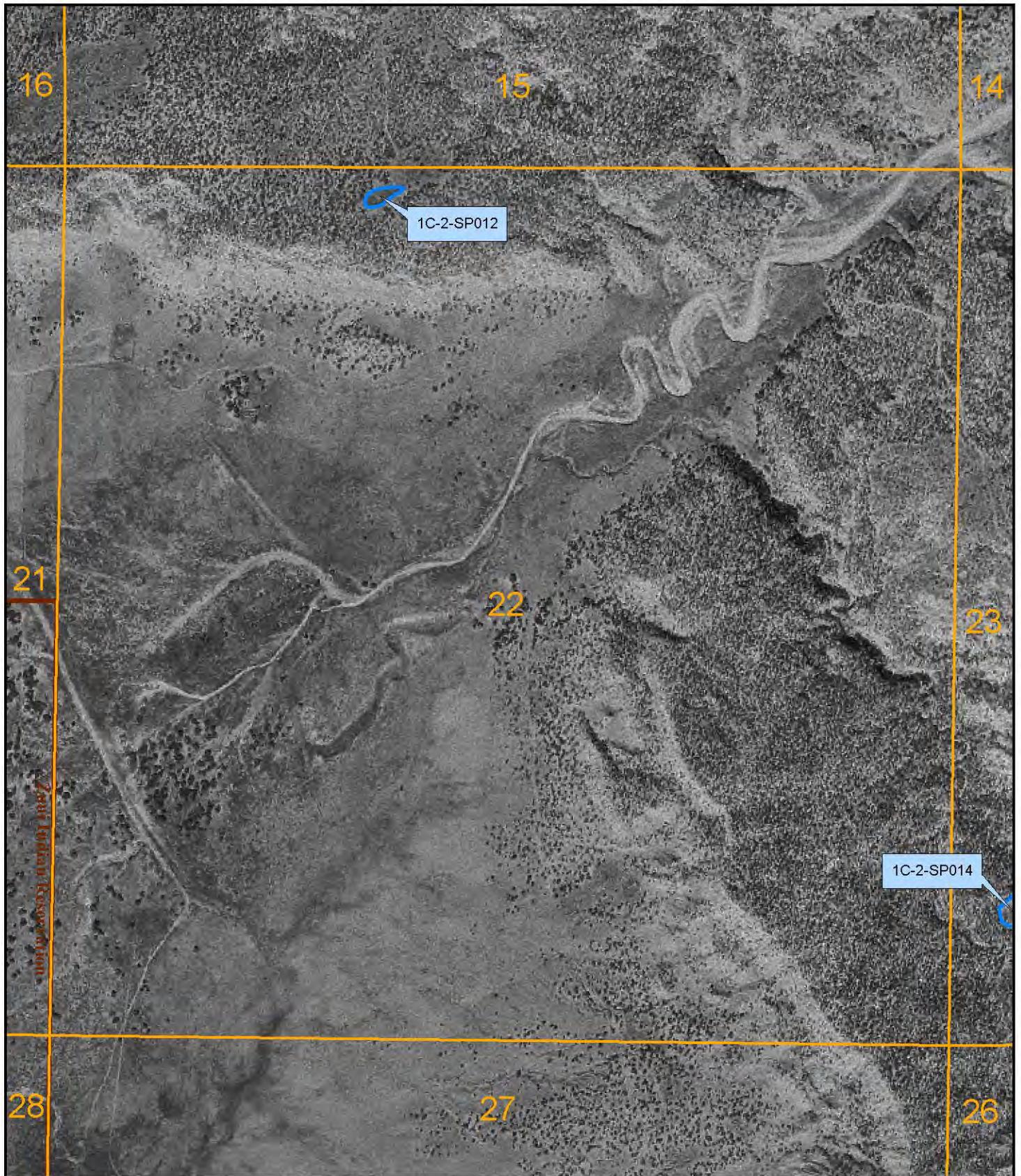
Subfile Number: ZRB-1-0075 Consolidated  
PLSS: S21, T11N, R19W  
Sheet 9 of 88



**Natural Resources Consulting Engineers, Inc.**

Fort Collins, CO    Oakland, CA    Asmara, ERITREA

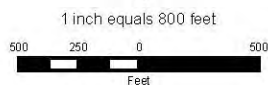
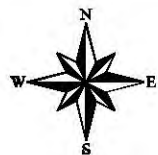
Project Manager: L. Niel Allen, P.E., Ph.D.



October 2006

**LEGEND**

-  Well
-  Town
-  Stock Pond
-  Basin Boundary
-  Sub-Area Boundary
-  Section Boundary



Zuni River Basin  
Hydrographic Survey

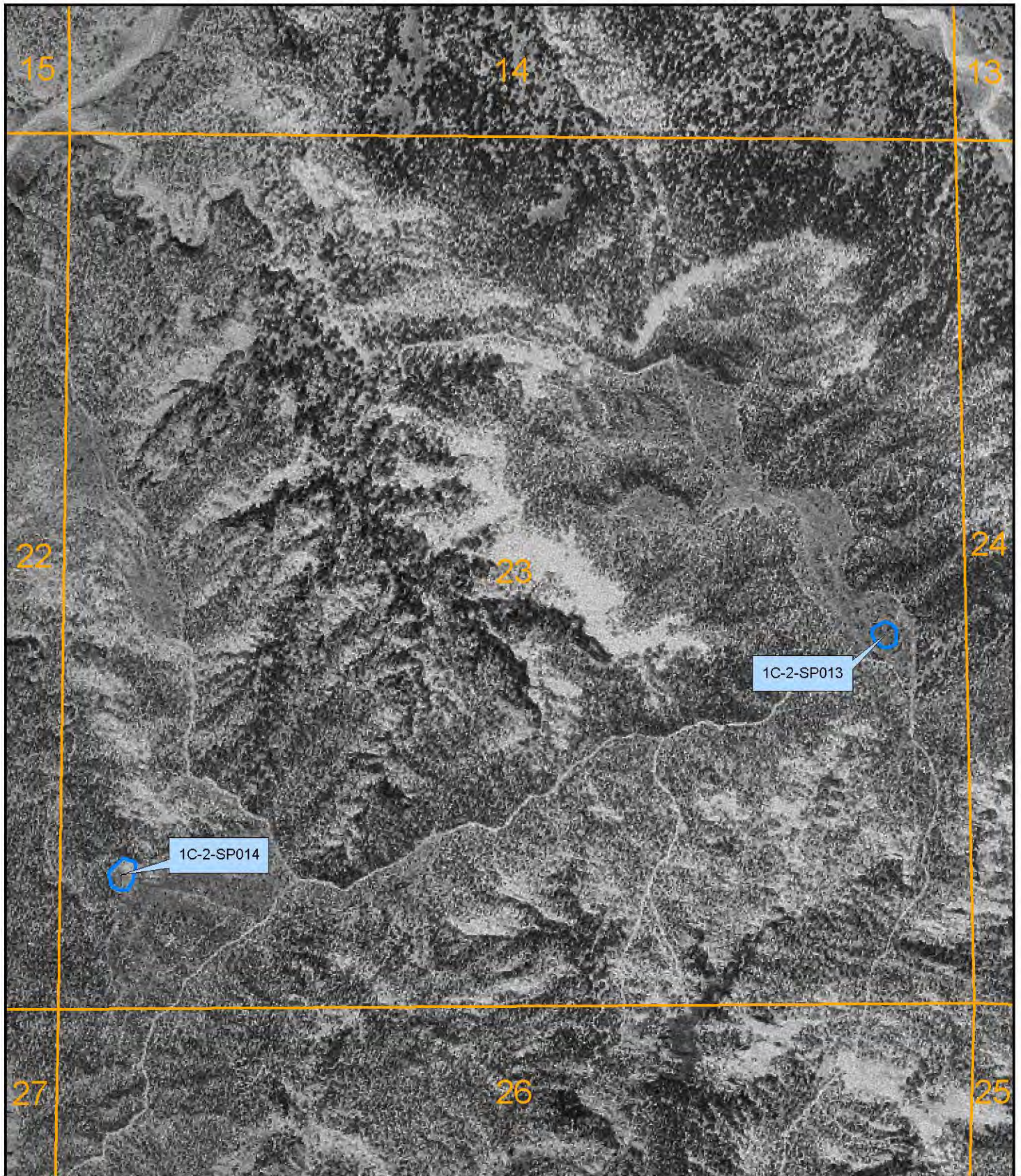
Subfile Number: ZRB-1-0075 Consolidated  
PLSS: S22, T11N, R19W  
Sheet 10 of 88



**Natural Resources Consulting Engineers, Inc.**

Fort Collins, CO    Oakland, CA    Asmara, ERITREA

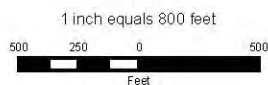
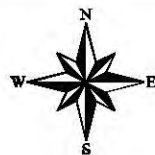
Project Manager: L. Niel Allen, P.E., Ph.D.



October 2006

**LEGEND**

-  Well
-  Town
-  Stock Pond
-  Basin Boundary
-  Sub-Area Boundary
-  Section Boundary



Zuni River Basin  
Hydrographic Survey

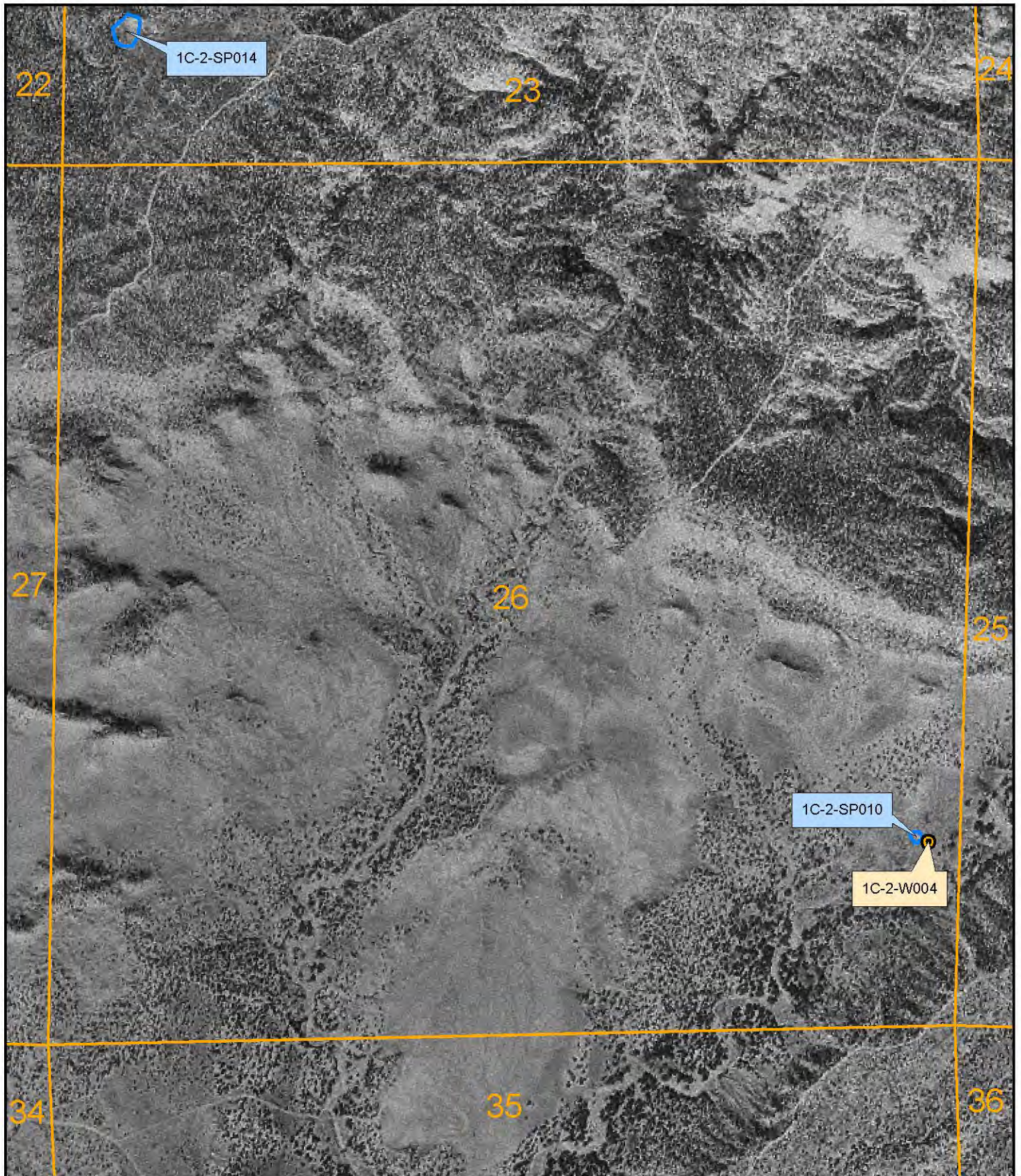
Subfile Number: ZRB-1-0075 Consolidated  
PLSS: S23, T11N, R19W  
Sheet 11 of 88



**Natural Resources Consulting Engineers, Inc.**

Fort Collins, CO    Oakland, CA    Asmara, ERITREA

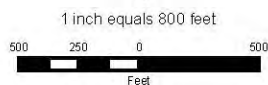
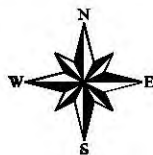
Project Manager: L. Niel Allen, P.E., Ph.D.



October 2006

**LEGEND**

-  Well
-  Town
-  Stock Pond
-  Basin Boundary
-  Sub-Area Boundary
-  Section Boundary



Zuni River Basin  
Hydrographic Survey

Subfile Number: ZRB-1-0075 Consolidated  
PLSS: S26, T11N, R19W  
Sheet 12 of 88



**Natural Resources Consulting Engineers, Inc.**

Fort Collins, CO    Oakland, CA    Asmara, ERITREA

Project Manager: L. Niel Allen, P.E., Ph.D.