







LEGEND

-  Well
-  Stock Pond
-  Sub-Area Boundary
-  Section Boundary



1 inch = 800 feet



Zuni River Basin
Hydrographic Survey

Subfile Number: ZRB-1-0075 Consolidated
PLSS: S04, T05N, R16W
Sheet 19 of 88

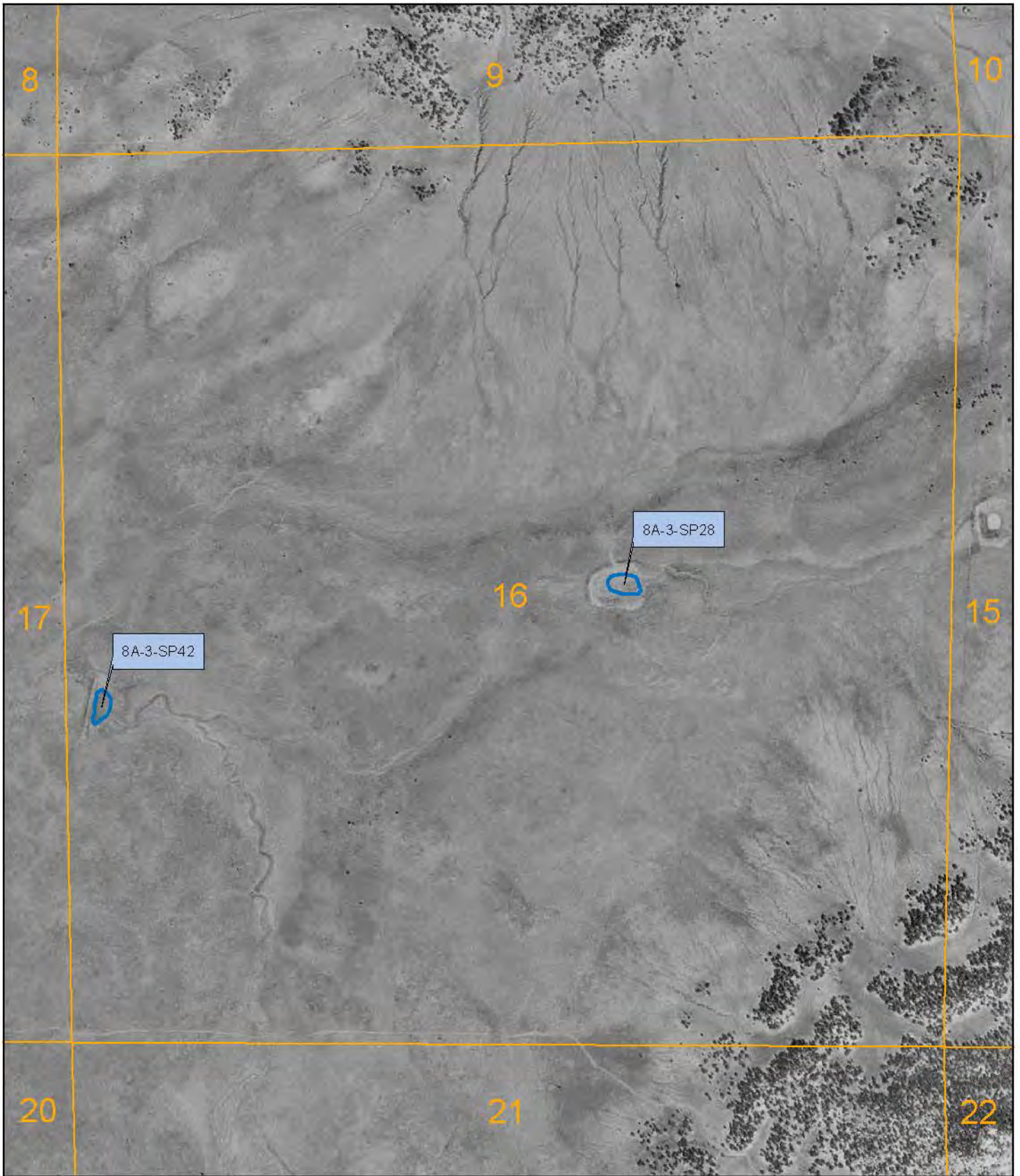
May 2012



Natural Resources Consulting Engineers, Inc.

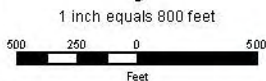
Fort Collins, CO Oakland, CA Asmara, ERITREA

Project Manager: L. Niel Allen, P.E., Ph.D.



LEGEND

-  Well
-  Town
-  Stock Pond
-  Sub-Area Boundary
-  Section Boundary



Zuni River Basin
Hydrographic Survey

Subfile Number: ZRB-1-0075 Consolidated
PLSS: S16, T08N, R14W
Sheet 20 of 88

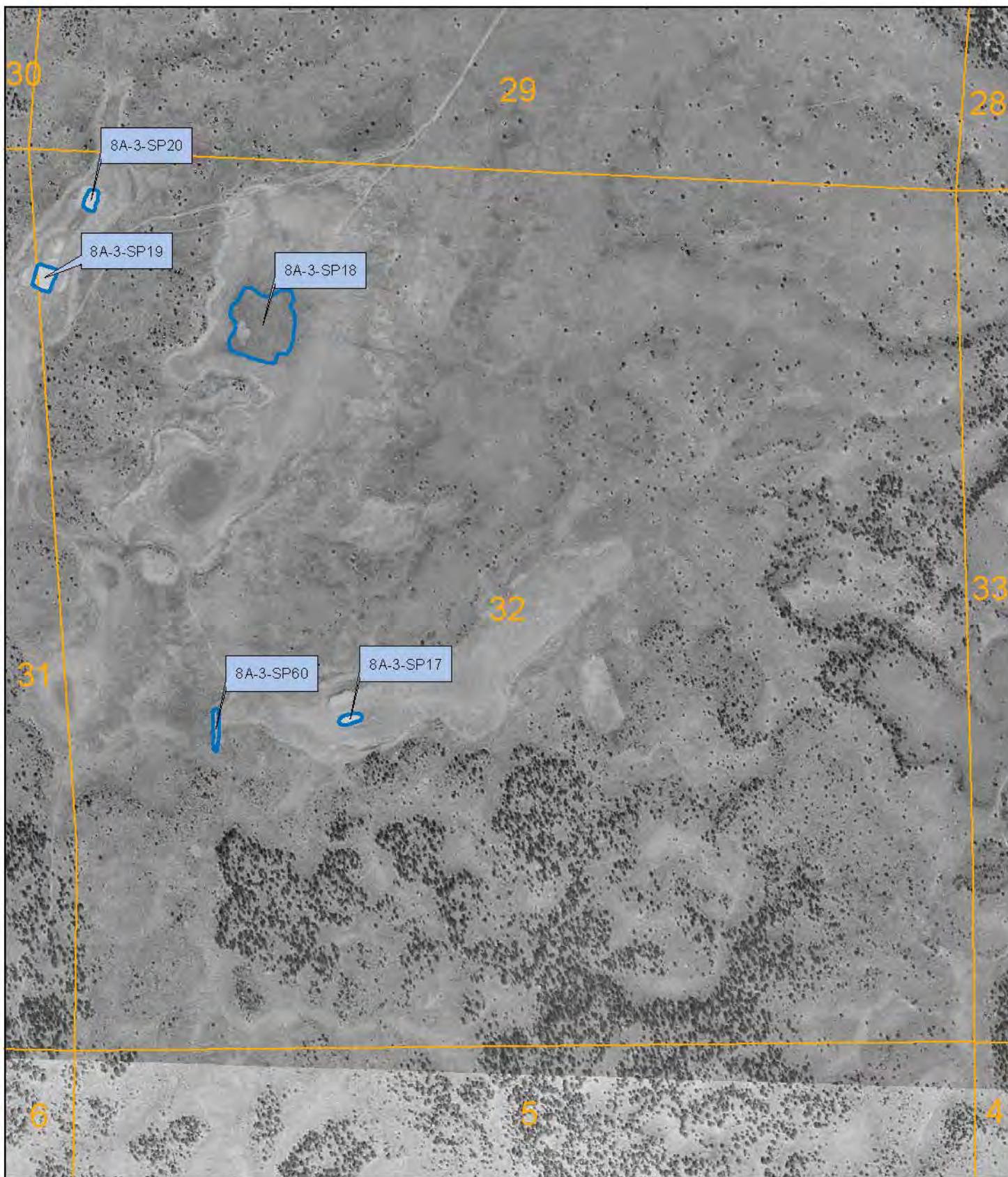
December 2005



Natural Resources Consulting Engineers, Inc.

Fort Collins, CO Oakland, CA Asmara, ERITREA

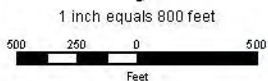
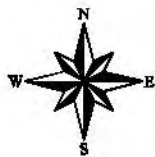
Project Manager: L. Niel Allen, P.E., Ph.D.



December 2005

LEGEND

-  Well
-  Town
-  Stock Pond
-  Sub-Area Boundary
-  Section Boundary



Zuni River Basin
Hydrographic Survey

Subfile Number: ZRB-1-0075 Consolidated
PLSS: S32, T08N, R14W
Sheet 21 of 88



Natural Resources Consulting Engineers, Inc.

Fort Collins, CO Oakland, CA Asmara, ERITREA

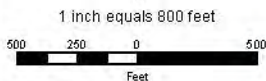
Project Manager: L. Niel Allen, P.E., Ph.D.



December 2005

LEGEND

-  Well
-  Town
-  Stock Pond
-  Sub-Area Boundary
-  Section Boundary



**Zuni River Basin
Hydrographic Survey**

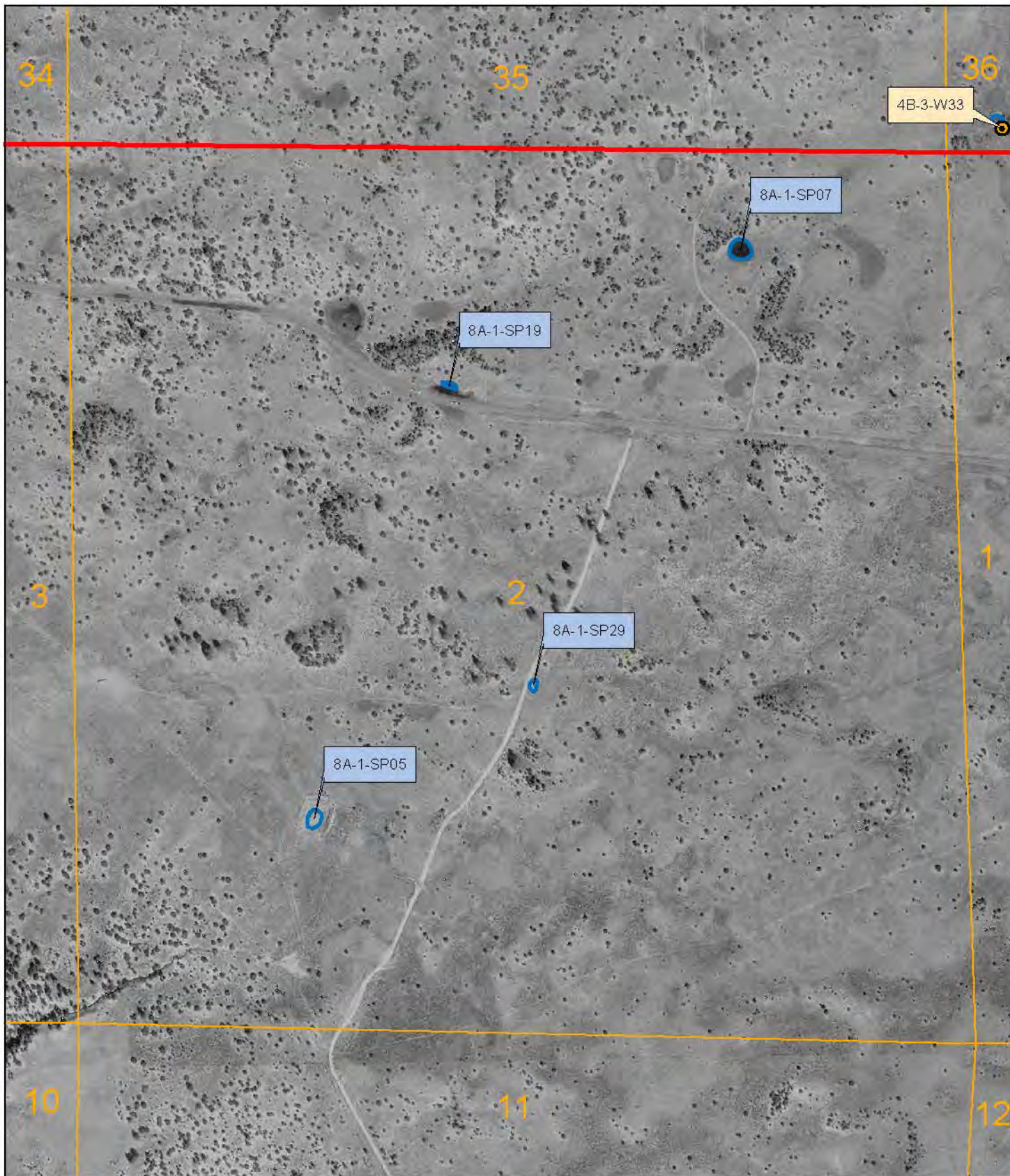
Subfile Number: ZRB-1-0075 Consolidated
PLSS: S36, T08N, R14W
Sheet 22 of 88



Natural Resources Consulting Engineers, Inc.

Fort Collins, CO Oakland, CA Asmara, ERITREA

Project Manager: L. Niel Allen, P.E., Ph.D.



LEGEND

-  Well
-  Town
-  Stock Pond
-  Sub-Area Boundary
-  Section Boundary



1 inch equals 800 feet
 500 250 0 500
 Feet

Zuni River Basin
 Hydrographic Survey



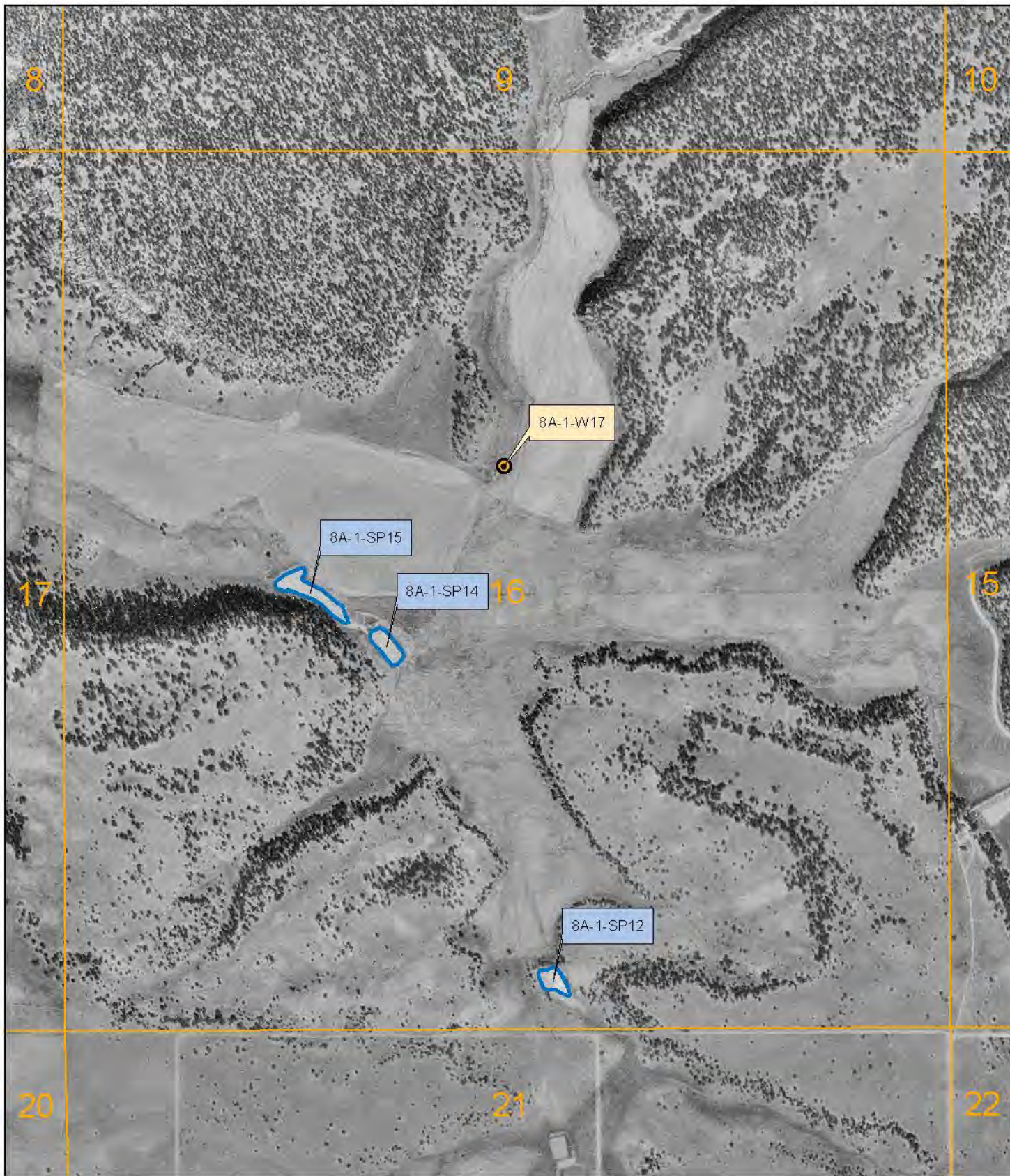
Natural Resources Consulting Engineers, Inc.

Fort Collins, CO Oakland, CA Asmara, ERITREA

Project Manager: L. Niel Allen, P.E., Ph.D.

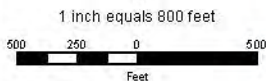
Subfile Number: ZRB-1-0075 Consolidated
 PLSS: S02, T09N, R14W
 Sheet 23 of 88

December 2005



LEGEND

-  Well
-  Town
-  Stock Pond
-  Sub-Area Boundary
-  Section Boundary



Zuni River Basin
Hydrographic Survey



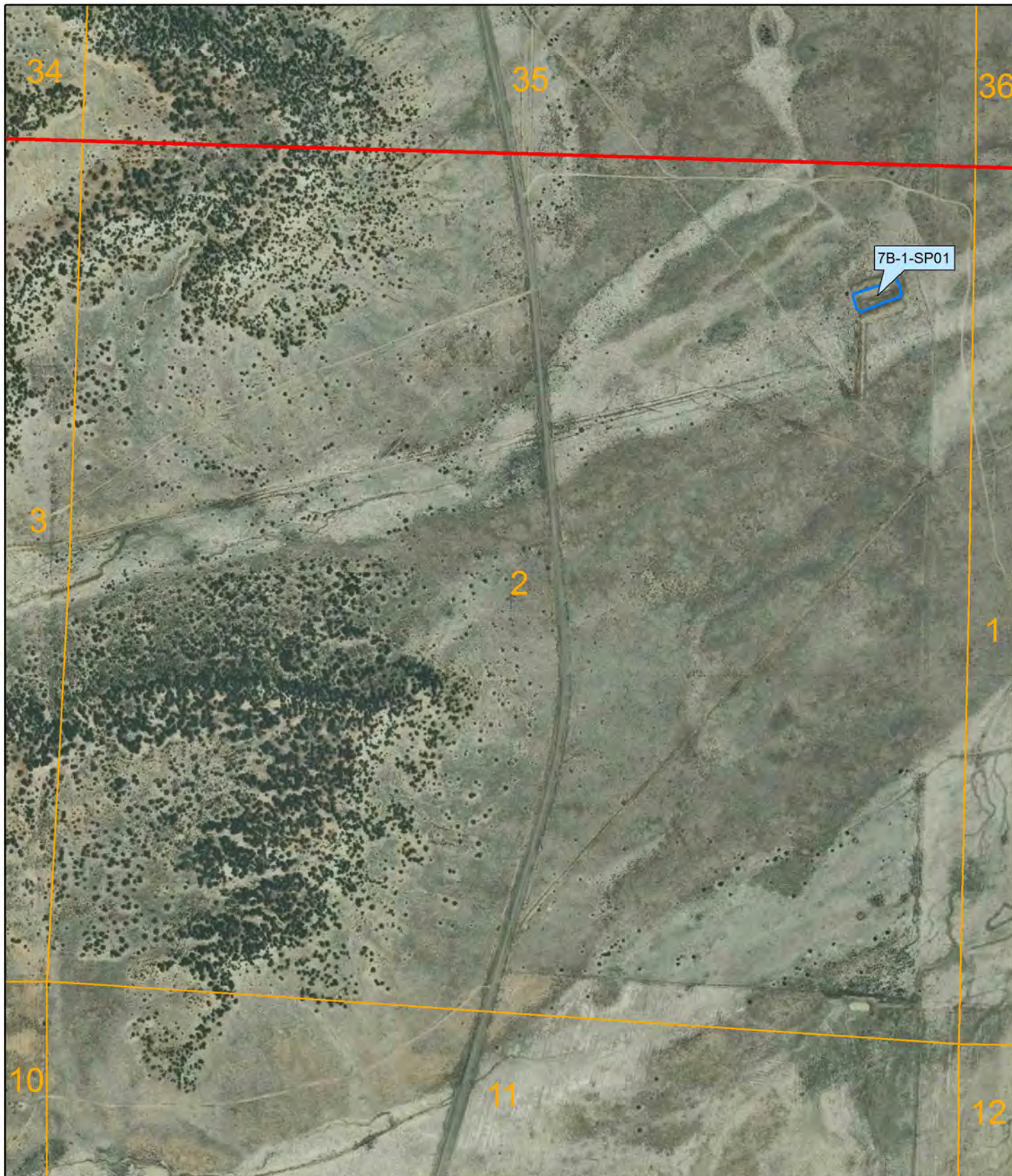
Natural Resources Consulting Engineers, Inc.

Fort Collins, CO Oakland, CA Asmara, ERITREA

Project Manager: L. Niel Allen, P.E., Ph.D.





December 2005

Subfile Number: ZRB-1-0075 Consolidated
PLSS: S16, T09N, R14W
Sheet 24 of 88



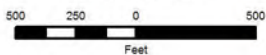
May 2012

LEGEND

-  Well
-  Stock Pond
-  Sub-Area Boundary
-  Section Boundary



1 inch = 800 feet

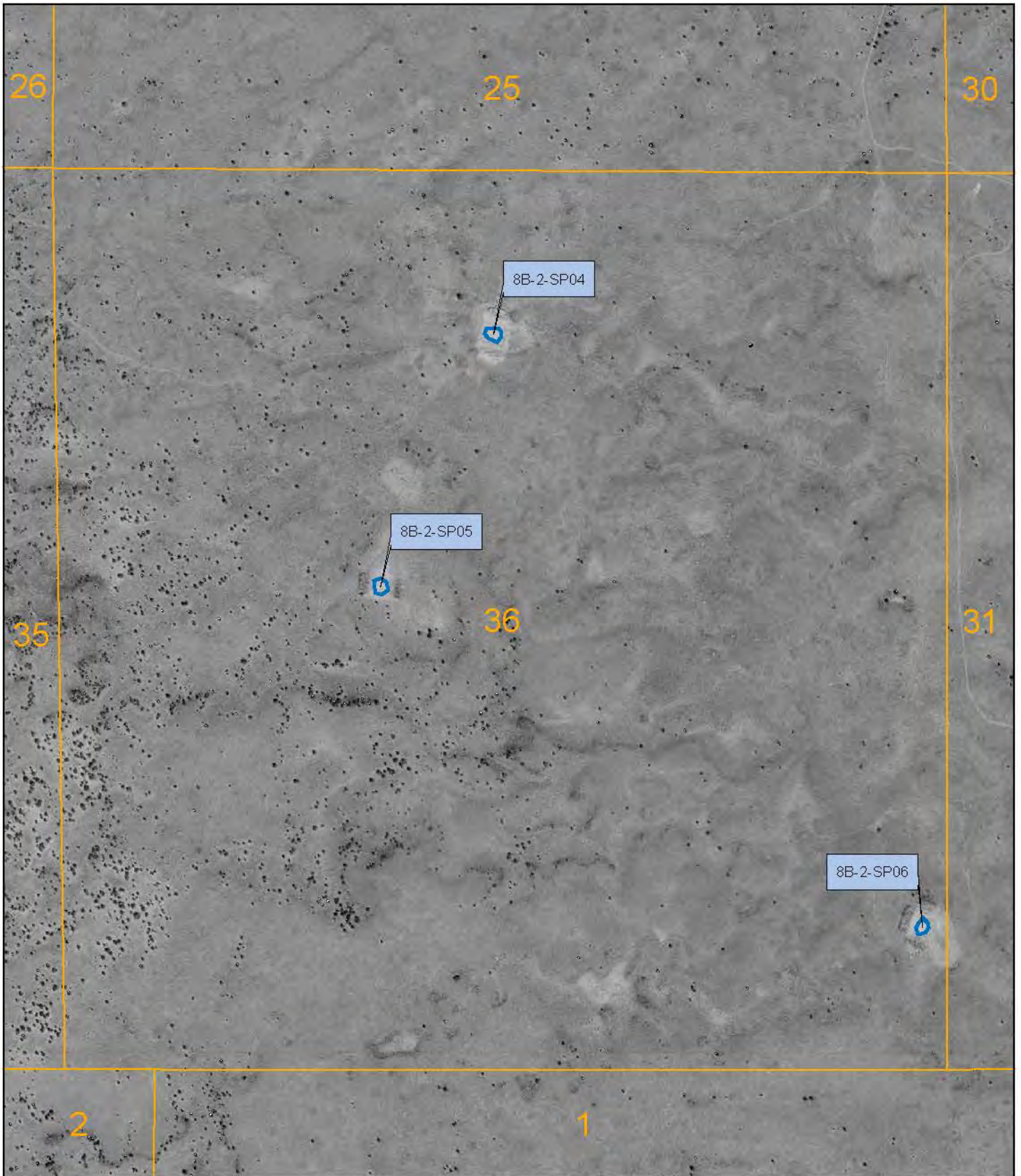


Zuni River Basin
Hydrographic Survey

Subfile Number: ZRB-1-0075 Consolidated
PLSS: S02, T09N, R16W
Sheet 25 of 88

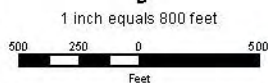


Natural Resources Consulting Engineers, Inc.
Fort Collins, CO Oakland, CA Asmara, ERITREA
Project Manager: L. Niel Allen, P.E., Ph.D.



LEGEND

-  Well
-  Town
-  Stock Pond
-  Sub-Area Boundary
-  Section Boundary



Zuni River Basin
Hydrographic Survey

Subfile Number: ZRB-1-0075 Consolidated
PLSS: S36, T09N, R14W
Sheet 26 of 88

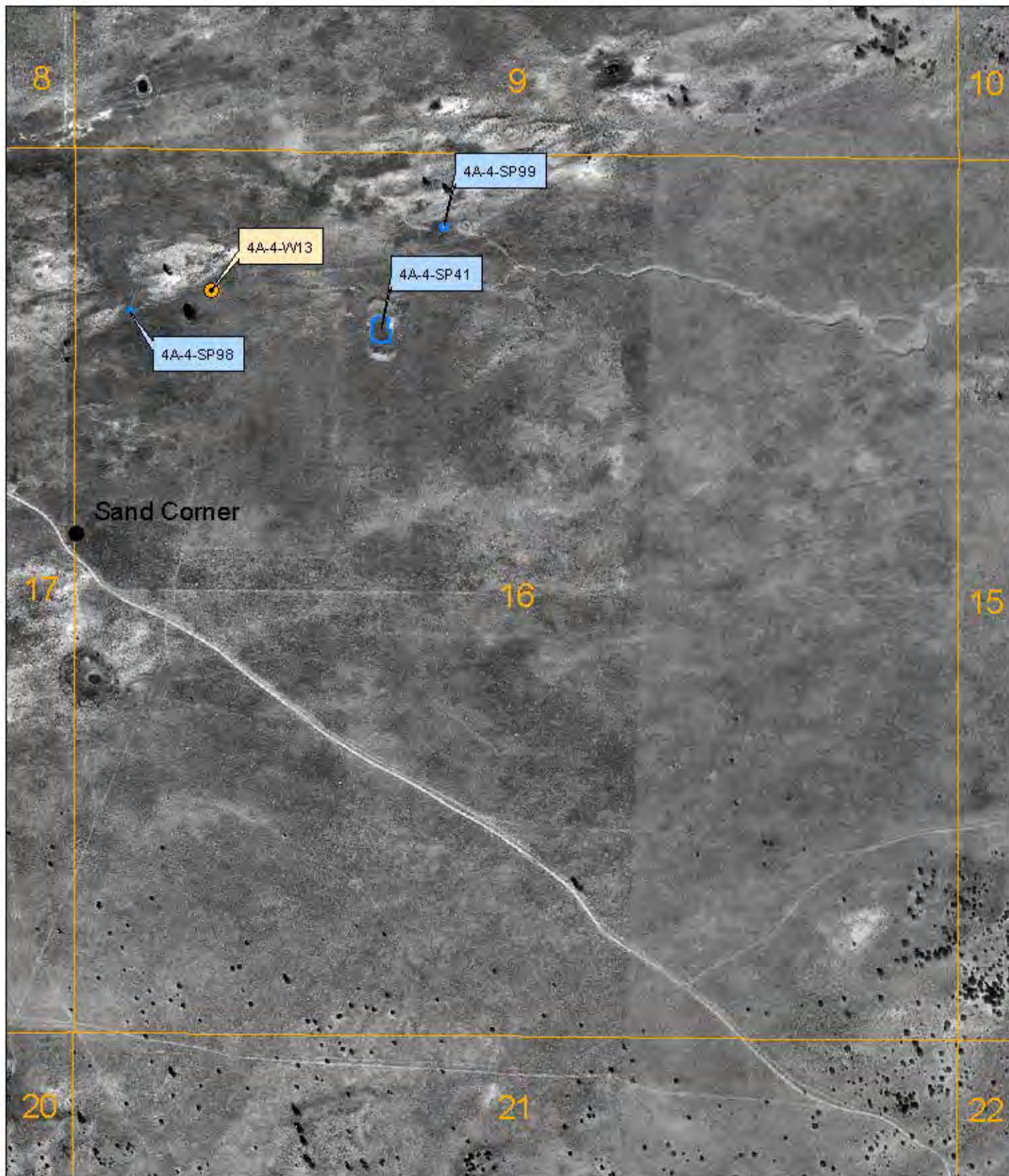
December 2005



Natural Resources Consulting Engineers, Inc.

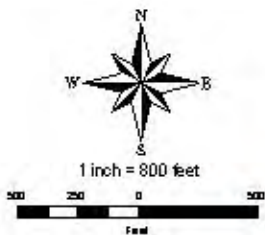
Fort Collins, CO Oakland, CA Asmara, ERITREA

Project Manager: L. Niel Allen, P.E., Ph.D.



LEGEND

-  Well
-  Town
-  Stock Pond
-  Sub-Area Boundary
-  Section Boundary



Zuni River Basin
Hydrographic Survey

Subfile Number: ZRB-1-0075 Consolidated
PLSS: S16, T10N, R14W
Sheet 27 of 88

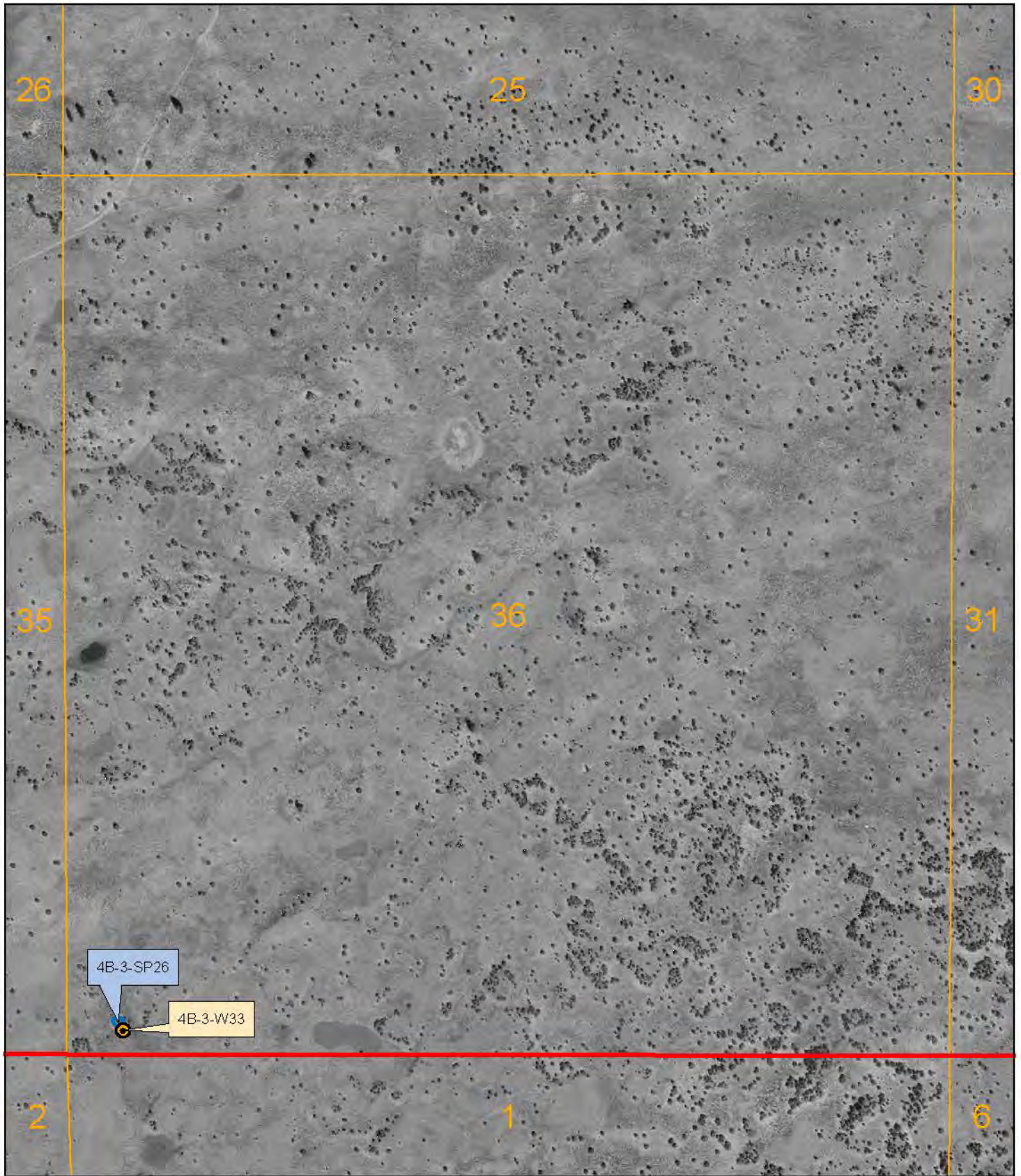
February 2010



Natural Resources Consulting Engineers, Inc.

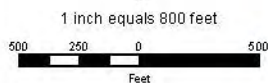
Fort Collins, CO Oakland, CA Asmara, ERITREA

Project Manager: L. Niel Allen, P.E., Ph.D.



LEGEND

-  Well
-  Town
-  Stock Pond
-  Sub-Area Boundary
-  Section Boundary



Zuni River Basin
Hydrographic Survey

Subfile Number: ZRB-1-0075 Consolidated
PLSS: S36, T10N, R14W
Sheet 28 of 88

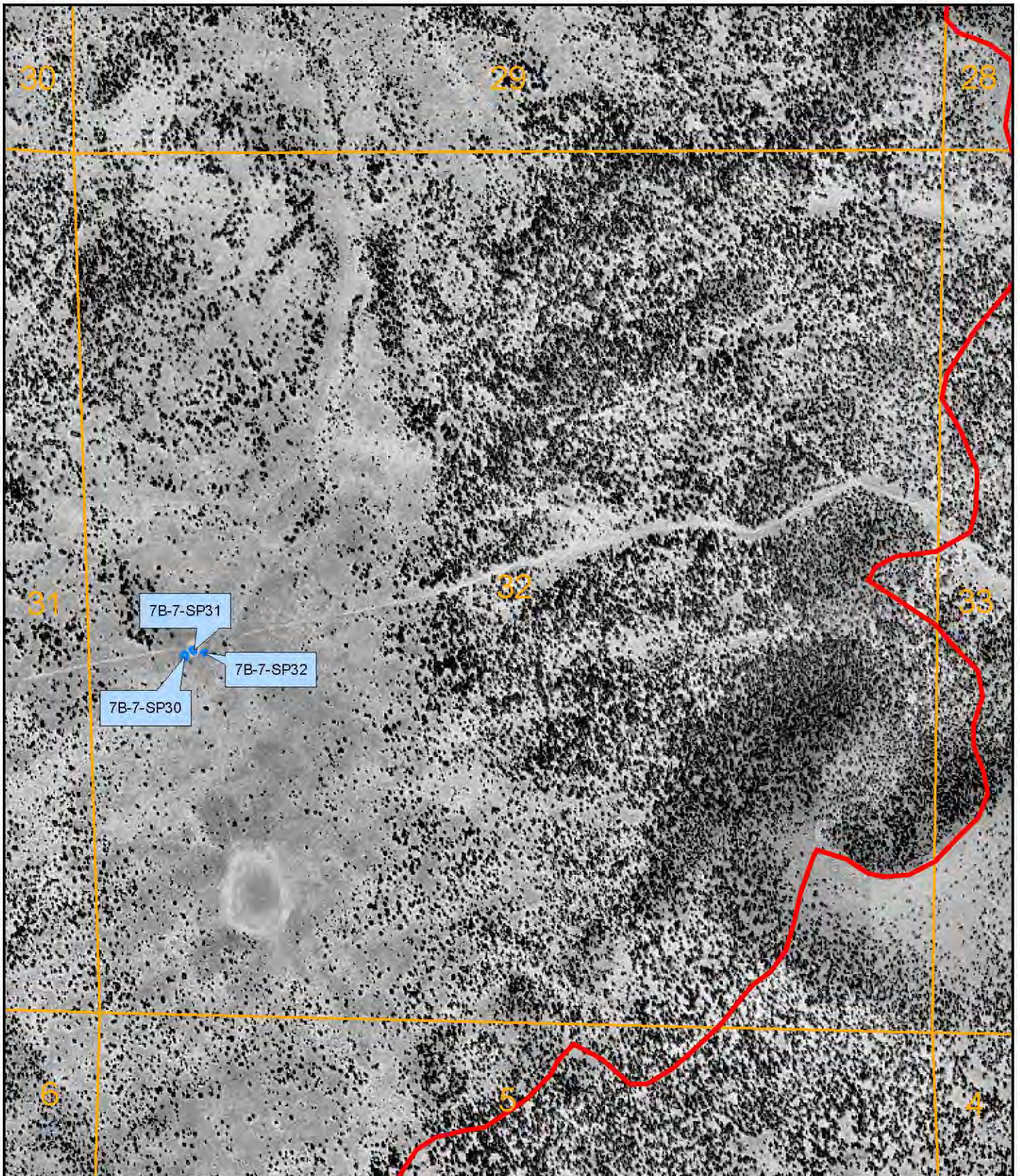
December 2005



Natural Resources Consulting Engineers, Inc.

Fort Collins, CO Oakland, CA Asmara, ERITREA

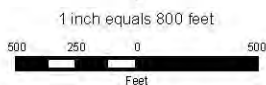
Project Manager: L. Niel Allen, P.E., Ph.D.



March 2006

LEGEND

-  Well
-  Town
-  Stock Pond
-  Sub-Area Boundary
-  Section Boundary



Zuni River Basin
Hydrographic Survey

Subfile Number: ZRB-1-0075 Consolidated
PLSS: S32, T06N, R15W
Sheet 29 of 88



Natural Resources Consulting Engineers, Inc.

Fort Collins, CO Oakland, CA Asmara, ERITREA

Project Manager: L. Niel Allen, P.E., Ph.D.